



**Hygiene Matters,  
Everywhere.**

—

**FANDA**  
QUALITY HYGIENIC ACCESSORIES

**PRODUCT  
CATALOGUE**



**FANDA**  
QUALITY HYGIENIC ACCESSORIES



**Welcome  
to Fanda Hygiene**

**2024/  
2025**

## Table of Content

### OUR HYGIENIC SOLUTIONS

---

### OUR SERVICES

---

### STAINLESS STEEL products

---

Paper Towel Dispenser	1
Paper Towel and Waste Combination Unit	4
Jumbo Roll Paper Dispenser	7
Toilet Roll Paper Dispenser	9
Manual Soap Dispenser	13
Glove Dispenser and Mask Dispenser	17
Waste Bin	19

### AUTOMATIC products

---

Automatic Air Freshener	27
Automatic Soap Dispenser	28
Automatic Hand Dryer	30
Automatic Sensor Faucet	33
Automatic Flusher	34

### PLASTIC products

---

Manual Soap Dispenser	35
Paper Towel Dispenser	40
Jumbo Roll Paper Dispenser	42
Folded Toilet Paper Dispenser	44
Paper Towel Roll Dispenser	45

### BATHROOM ACCESSORIES products

---

Safety Grab Bar	47
Shelves, baskets, hooks and others	48

### CONSUMABLE products

---



#### Public Restrooms and High Traffic Areas

Our products are ideal for restrooms in high-traffic public areas such as public restrooms, shopping malls, office buildings, airports, stadiums, event venues etc. They ensure optimal hygiene and user convenience in these large-scale environments.



#### Nursing Homes and Care Institutions

Our hygiene solutions are tailored for nursing homes, care institutions, and rehabilitation centers. They are suitable for restrooms in private rooms and public areas, ensuring a clean and comfortable environment for residents and staff.



#### Ultra-Clean and Contamination-Free Spaces

Our products are designed for environments requiring the highest levels of cleanliness, such as electronics and high-tech sectors, semiconductor manufacturing, biotechnology, chemical industries, and pharmaceutical spaces. They help maintain strict hygiene and contamination control standards essential in these precision-oriented industries.



**Fanda's Hygiene Solutions**

**for Every Environment**



#### Medical Facilities

Designed to meet the stringent hygiene standards of healthcare settings, our products are perfect for patient ward restrooms, hospital restrooms, clinics, operating rooms, and laboratories. They help maintain a sterile and safe environment for patients and staff.



#### Commercial Kitchens and the Food Industry

In commercial kitchens, including those in restaurants, hotels, schools, and food processing plants, our products contribute to maintaining high hygiene standards essential for food safety. They are ensuring cleanliness, efficiency, and compliance with health regulations.



#### Educational Institutions

For schools, colleges, and universities, our products are ideal for restrooms, classroom wash-basins, laboratories, and dining halls. They support the hygiene needs of educational environments, promoting the health and well-being of students and staff.

## Empower Your Brand with Fanda



### White Labeling

Our white labeling services allow you to offer standardized products under your own brand without the need for design modifications. This cost-effective solution provides high-quality, ready-made products that can be quickly branded and sold.



### OEM (Original Equipment Manufacturer)

Benefit from our advanced manufacturing capabilities to produce high-quality hygiene products based on your precise specifications. Our OEM services ensure that your designs are brought to life with the highest standards of quality and efficiency.



### ODM (Original Design Manufacturer)

Looking for innovative product designs without the hassle of R&D? Our ODM services offer you a complete package from concept to finished product.



### Private Labeling

Expand your product line with our private labeling services. Choose from our range of high-quality hygiene products, which we will customize with your brand's logo and packaging. This service is perfect for businesses looking to quickly enter the market with reliable products.

## Advance Production with Fanda



### Precision Bending

Our advanced bending equipment precisely shapes stainless steel sheets into various angles and forms. This process ensures that the products are strong and aesthetically pleasing, meeting diverse design requirements.



### Stainless Steel Sheet Stamping

Our stainless steel stamping services utilize high-efficiency presses and precision molds to quickly produce components that meet design specifications. This method is ideal for high-volume production, requiring high precision and complex shapes.



### Plastic Injection Molding

We offer high-precision plastic injection molding services to produce plastic parts of various shapes and sizes. This technology is suitable for mass production, ensuring consistent quality and accuracy across all products.



### Handcrafted Prototype Samples

Meticulously crafted for pre-production design discussions, aesthetic exploration, functionality testing, and project reviews. Elevate your customization process with our precision prototypes, ensuring seamless transition from concept to mass production.



AE-958

**NEW**

### Slimline Paper Towel Dispenser

Installation: Wall mounted  
 Volume: single pack of slimline paper Towel  
 Accessories: Lock with keys  
 Material Thickness: 22-gauge / 0.8 mm  
 Packing: 10 pcs/ ctn

Item No.	Material	Finished	Dimension (W*D*H)
AE-958	SS #304	Brushed	280*102*200 mm
AE-958B	SS #304	Polished	280*102*200 mm
AE-958M	Steel with Powder coating	Matte Black	280*102*200 mm
AE-958W	Steel with Powder coating	White	280*102*200 mm



AE-978

**NEW**

### Slimline Paper Towel Dispenser

Installation: Wall mounted  
 Volume: Double packs of Slimline Paper Towel  
 Accessories: Lock with keys  
 Material Thickness: 22-gauge / 0.8 mm  
 Packing: 6 pcs/ ctn

Item No.	Material	Finished	Dimension (W*D*H)
AE-978	SS #304	Brushed	280*102*380 mm
AE-978B	SS #304	Polished	280*102*380 mm
AE-978M	Steel with Powder coating	Matte Black	280*102*380 mm
AE-978W	Steel with Powder coating	White	280*102*380 mm

Customise sizes and surface finishes are available upon request.



AE-968

### Ultraslim Paper Towel Dispenser

Installation: Wall mounted  
 Volume: packs of Ultraslim Paper Towel  
 Accessories: Lock with keys  
 Material Thickness: 22-gauge / 0.8 mm  
 Packing: 8 pcs/ ctn

Item No.	Material	Finished	Dimension (W*D*H)
AE-968	SS #304	Brushed	270*78*400 mm
AE-968B	SS #304	Polished	270*78*400 mm
AE-968M	Steel with Powder coating	Matte Black	270*78*400 mm
AE-968W	Steel with Powder coating	White	270*78*400 mm

### Compact Paper Towel Dispenser

Installation: Wall mounted  
 Volume: packs of Compact Paper Towel  
 Accessories: Lock with keys  
 Material Thickness: 22-gauge / 0.8 mm  
 Packing: 8 pcs/ ctn

Item No.	Material	Finished	Dimension (W*D*H)
AE-988	SS #304	Brushed	230*78*380 mm
AE-988B	SS #304	Polished	230*78*380 mm
AE-988M	Steel with Powder coating	Matte Black	230*78*380 mm
AE-988W	Steel with Powder coating	White	230*78*380 mm



AE-988



AE-958-01

**NEW**

### Behind Mirror Paper Towel Dispenser

Installation: Wall mounted or Behind Mirror Cabinet  
 Volume: single pack of slimline paper Towel  
 Material Thickness: 22-gauge / 0.8 mm  
 Packing: 10 pcs/ ctn

Item No.	Material	Finished	Dimension (W*D*H)
AE-958-01	SS #304	Brushed	280*102*180 mm

Customise sizes are available upon request.



AE-978-01

**NEW**

### Behind Mirror Paper Towel Dispenser

Installation: Wall mounted or Behind Mirror Cabinet  
 Volume: double pack of Slimline Paper Towel  
 Material Thickness: 22-gauge / 0.8 mm  
 Packing: 6 pcs/ ctn

Item No.	Material	Finished	Dimension (W*D*H)
AE-978-01	SS #304	Brushed	280*102*360 mm

Customise sizes are available upon request.



FD-918

### Slimline Paper Towel Dispenser

Installation: Wall mounted  
 Volume: single pack of slimline paper Towel  
 Accessories: Lock with keys  
 Material Thickness: 22-gauge / 0.8 mm  
 Packing: 10 pcs/ ctn

Item No.	Material	Finished	Dimension (W*D*H)
FD-918	SS #304	Brushed	280*102*203 mm
FD-918B	SS #304	Polished	280*102*203 mm
FD-918M	Steel with Powder coating	Matte Black	280*102*203 mm
FD-918W	Steel with Powder coating	White	280*102*203 mm

### Slimline Paper Towel Dispenser

Installation: Wall mounted  
 Volume: single pack of slimline paper Towel  
 Accessories: Lock with keys  
 Material Thickness: 22-gauge / 0.8 mm  
 Packing: 8 pcs/ ctn

Item No.	Material	Finished	Dimension (W*D*H)
FD-928	SS #304	Brushed	280*102*369 mm
FD-928B	SS #304	Polished	280*102*369 mm
FD-928M	Steel with Powder coating	Matte Black	280*102*369 mm
FD-928W	Steel with Powder coating	White	280*102*369 mm



FD-928



AE-5011S

### Recessed Paper Towel Dispenser and Waste Bin Combination Unit

Installation: Wall mounted  
 Wall opening: 305\*105\*663mm  
 Accessories: Lock with keys  
 Material Thickness: 22-gauge / 0.8 mm  
 Packing: 1 pcs/ ctn

Item No.	Material	Finished	Dimension (W*D*H)
AE-5011S	SS #304	Brushed	360*105*711 mm

**Customize Your Hygiene Solutions with Our Micro-Customization Services!**

At Fanda, we understand that every detail matters. That's why we offer micro-customization services to tailor our hygiene products to your specific needs. Whether you need to adjust the viewing window or modify specific accessories on our existing products. We've got you covered!



AE-5015

### Recessed Paper Towel Dispenser and Waste Bin Combination Unit

Installation: Recessed wall mounted  
 Wall opening: 280\*102\*770mm  
 Accessories: Lock with keys  
 Material Thickness: 22-gauge / 0.8 mm  
 Packing: 1 pcs/ ctn

Item No.	Material	Finished	Dimension (W*D*H)
AE-5015	SS #304	Brushed	330*112*790 mm
AE-5015M	Steel with Powder coating	Matte Black	330*112*790 mm



AE-5015E

### Paper Towel Dispenser and Waste Bin Combination Unit

Installation: Wall mounted  
 Volume: single pack of slimline paper Towel  
 Accessories: Lock with keys  
 Material Thickness: 22-gauge / 0.8 mm  
 Packing: 10 pcs/ ctn

Item No.	Material	Finished	Dimension (W*D*H)
AE-5015E	SS #304	Brushed	300*150*770 mm
AE-5015EM	Steel with Powder coating	Matte Black	300*150*770 mm



AE-5014

### Recessed Paper Towel Dispenser and Waste Bin Combination Unit

Installation: Recessed wall mounted  
 Wall opening: 280\*105\*390mm  
 Accessories: Lock with keys  
 Material Thickness: 22-gauge / 0.8 mm  
 Packing: 1 pcs/ ctn

Item No.	Material	Finished	Dimension (W*D*H)
AE-5014	SS #304	Brushed	330*112*440 mm
AE-5014M	Steel with Powder coating	Matte Black	330*112*440 mm



AE-5016

### Recessed Paper Towel Dispenser and Waste Bin Combination Unit

Installation: Recessed wall mounted  
 Wall opening: 290\*105\*1360mm  
 Accessories: Lock with keys  
 Material Thickness: 22-gauge / 0.8 mm  
 Packing: 1 pcs/ ctn

Item No.	Material	Finished	Dimension (W*D*H)
AE-5016	SS #304	Brushed	330*112*1370 mm
AE-5016M	Steel with Powder coating	Matte Black	330*112*1370 mm



AE-5016E

### Paper Towel Dispenser and Waste Bin Combination Unit

Installation: Wall mounted  
 Accessories: Lock with keys  
 Material Thickness: 22-gauge / 0.8 mm  
 Packing: 1 pcs/ ctn

Item No.	Material	Finished	Dimension (W*D*H)
AE-5016E	SS #304	Brushed	300*145*1380 mm
AE-5016EM	Steel with Powder coating	Matte Black	300*145*1380 mm



AE-5018

### Recessed Paper Towel Dispenser / Automatic Hand Dryer and Waste Bin Combination Unit

Installation: Recessed wall mounted  
 Wall opening: 350\*105\*1550 mm  
 Voltage: 220-240v  
 Accessories: Lock with keys  
 Material Thickness: 22-gauge / 0.8 mm  
 Packing: 1 pcs/ ctn

Item No.	Material	Finished	Dimension (W*D*H)
AE-5018	SS #304	Brushed	375*16*1580 mm
AE-5018B	SS #304	Polished	375*16*1580 mm
AE-5018M	Steel with Powder coating	Matte Black	375*16*1580 mm

WORK IN PROGRESS



AE-5019

### Recessed Paper Towel Dispenser / Automatic Hand Dryer and Waste Bin Combination Unit

Installation: Recessed wall mounted  
 Wall opening: 320\*100\*1610 mm  
 Voltage: 220-240v  
 Accessories: Lock with keys  
 Material Thickness: 22-gauge / 0.8 mm  
 Packing: 1 pcs/ ctn

Item No.	Material	Finished	Dimension (W*D*H)
AE-5019	SS #304	Brushed	362*3.5*1660 mm
AE-5019B	SS #304	Polished	362*3.5*1660 mm
AE-5019M	Steel with Powder coating	Matte Black	362*3.5*1660 mm

WORK IN PROGRESS



AE-915

**NEW**

### Jumbo Toilet Roll Dispenser

Installation: Wall mounted with full backplate  
 Optional inner core: 60mm or 72mm  
 Accessories: Lock with keys  
 Material Thickness: 22-gauge / 0.8 mm  
 Packing: 6 pcs/ ctn

Item No.	Material	Finished	Dimension (W*D*H)
AE-915	SS #430	Brushed	Ø 275*122.5 mm
AE-915-304	SS #304	Brushed	Ø 275*122.5 mm
AE-915M	Steel with Powder coating	Matte Black	Ø 275*122.5 mm
AE-915W	Steel with Powder coating	White	Ø 275*122.5 mm



AE-995

### Dual Jumbo Toilet Roll Dispenser

Installation: Wall mounted with full backplate  
 Optional inner core: 60mm or 72mm  
 Accessories: Lock with keys  
 Material Thickness: 22-gauge / 0.8 mm  
 Packing: 4 pcs/ ctn

Item No.	Material	Finished	Dimension (W*D*H)
AE-995	SS #430	Brushed	477*130*263 mm
AE-995-304	SS #304	Brushed	477*130*263 mm
AE-995M	Steel with Powder coating	Matte Black	477*130*263 mm
AE-995W	Steel with Powder coating	White	477*130*263 mm



FD-92520

### Jumbo Toilet Roll Dispenser

Installation: Wall mounted  
 Optional inner core: 60mm or 72mm  
 Accessories: Lock with keys  
 Material Thickness: 22-gauge / 0.8 mm  
 Packing: 6 pcs/ ctn

Item No.	Material	Finished	Dimension (W*D*H)
FD-92520	SS #430	Brushed	Ø 273*120 mm
FD-92520B	SS #430	Polished	Ø 273*120 mm
FD-92520M	Steel with Powder coating	Matte Black	Ø 273*120 mm
FD-92520W	Steel with Powder coating	White	Ø 273*120 mm



AE-842

### Jumbo Toilet Roll Dispenser

Installation: Wall mounted with full backplate  
 Optional inner core: 60mm or 72mm  
 Accessories: Lock with keys  
 Material Thickness: 22-gauge / 0.8 mm  
 Packing: 6 pcs/ ctn

Item No.	Material	Finished	Dimension (W*D*H)
AE-842	SS #304	Brushed	272*121*280 mm
AE-842B	SS #304	Polished	272*121*280 mm
AE-842M	Steel with Powder coating	Matte Black	272*121*280 mm
AE-842W	Steel with Powder coating	White	272*121*280 mm



AE-945

### Jumbo Toilet Roll Dispenser

Installation: Wall mounted with full backplate  
 Optional inner core: 60mm or 72mm  
 Accessories: Lock with keys  
 Material Thickness: 22-gauge / 0.8 mm  
 Packing: 6 pcs/ ctn

Item No.	Material	Finished	Dimension (W*D*H)
AE-945	SS #304	Brushed	270*118*278 mm
AE-945B	SS #304	Polished	270*118*278 mm
AE-945M	Steel with Powder coating	Matte Black	270*118*278 mm
AE-945W	Steel with Powder coating	White	270*118*278 mm



FD-925

### Jumbo Toilet Roll Dispenser

Installation: Wall mounted  
 Optional inner core: 60mm or 72mm  
 Accessories: Lock with keys  
 Material Thickness: 22-gauge / 0.8 mm  
 Packing: 6 pcs/ ctn

Item No.	Material	Finished	Dimension (W*D*H)
FD-925	SS #430	Brushed	270*115*285 mm
FD-925-304	SS #304	Brushed	270*115*285 mm
FD-925M	Steel with Powder coating	Matte Black	270*115*285 mm
FD-925W	Steel with Powder coating	White	270*115*285 mm



AE-975

### Jumbo Toilet Roll Dispenser

Installation: Wall mounted with full backplate  
 Optional inner core: 60mm or 72mm  
 Accessories: Lock with keys  
 Material Thickness: 22-gauge / 0.8 mm  
 Packing: 6 pcs/ ctn

Item No.	Material	Finished	Dimension (W*D*H)
AE-975	SS #304	Brushed	305*118*313 mm
AE-975B	SS #304	Polished	305*118*313 mm
AE-975M	Steel with Powder coating	Matte Black	305*118*313 mm
AE-975W	Steel with Powder coating	White	305*118*313 mm



AE-935

### Large Jumbo Toilet Roll Dispenser

Installation: Wall mounted with full backplate  
 Optional inner core: 60mm or 72mm  
 Accessories: Lock with keys  
 Material Thickness: 22-gauge / 0.8 mm  
 Packing: 6 pcs/ ctn

Item No.	Material	Finished	Dimension (W*D*H)
AE-935	SS #430	Brushed	Ø 360*115 mm
AE-935-304	SS #304	Polished	Ø 360*115 mm
AE-935M	Steel with Powder coating	Matte Black	Ø 360*115 mm
AE-935W	Steel with Powder coating	White	Ø 360*115 mm





AE-12022

### Interleaved Toilet Tissue Dispenser

Installation: Wall mounted  
 Volume: Two packs of Interleaved toilet tissue  
 Accessories: Lock with keys  
 Material Thickness: 22-gauge / 0.8 mm  
 Packing: 15 pcs/ ctn

Item No.	Material	Finished	Dimension (W*D*H)
AE-12022	SS #430	Brushed	120*120*320 mm
AE-12022B	SS #430	Polished	120*120*320 mm
AE-12022M	Steel with Powder coating	Matte Black	120*120*320 mm
AE-12022W	Steel with Powder coating	White	120*120*320 mm



AE-261R

### Recessed Single Toilet Roll Dispenser

Installation: Recessed wall mounted  
 Volume: One roll of toilet tissue roll  
 Accessories: plastic spindle  
 Material Thickness: 22-gauge / 0.8 mm  
 Packing: 24 pcs/ ctn

Item No.	Material	Finished	Dimension (W*D*H)
AE-261RSS	SS #304	Brushed	160*28*160 mm
AE-261R	SS #304	Polished	160*28*160 mm



AE-12042

### Double Toilet Roll Dispenser

Installation: Wall mounted  
 Volume: Two rolls of toilet tissue roll  
 Accessories: Lock with keys  
 Material Thickness: 22-gauge / 0.8 mm  
 Packing: 15 pcs/ ctn

Item No.	Material	Finished	Dimension (W*D*H)
AE-12042	SS #304	Brushed	117*113*250 mm
AE-12042B	SS #304	Polished	117*113*250 mm
AE-12042M	Steel with Powder coating	Matte Black	117*113*250 mm
AE-12042W	Steel with Powder coating	White	117*113*250 mm



AE-261

### Single Toilet Roll Dispenser

Installation: Wall mounted  
 Volume: One roll of toilet tissue roll  
 Accessories: plastic spindle  
 Material Thickness: 22-gauge / 0.8 mm  
 Packing: 24 pcs/ ctn

Item No.	Material	Finished	Dimension (W*D*H)
AE-261SS	SS #304	Brushed	162*81*162 mm
AE-261	SS #304	Polished	162*81*162 mm



AE-12012

### Double Toilet Roll Dispenser

Installation: Wall mounted  
 Volume: Two rolls of toilet tissue roll  
 Accessories: Lock with keys  
 Material Thickness: 22-gauge / 0.8 mm  
 Packing: 15 pcs/ ctn

Item No.	Material	Finished	Dimension (W*D*H)
AE-12012	SS #304	Brushed	125*125*295 mm
AE-12012B	SS #304	Polished	125*125*295 mm
AE-12012M	Steel with Powder coating	Matte Black	125*125*295 mm
AE-12012W	Steel with Powder coating	White	125*125*295 mm



AE-263R

### Recessed Double Toilet Roll Dispenser

Installation: Recessed wall mounted  
 Volume: Two rolls of toilet tissue roll  
 Accessories: plastic spindles  
 Material Thickness: 22-gauge / 0.8 mm  
 Packing: 12 pcs/ ctn

Item No.	Material	Finished	Dimension (W*D*H)
AE-263RSS	SS #304	Brushed	322*28*160 mm
AE-263R	SS #304	Polished	322*28*160 mm



AE-12013

### Triple Toilet Roll Dispenser

Installation: Wall mounted  
 Volume: Three rolls of toilet tissue roll  
 Accessories: Lock with keys  
 Material Thickness: 22-gauge / 0.8 mm  
 Packing: 12 pcs/ ctn

Item No.	Material	Finished	Dimension (W*D*H)
AE-12013	SS #304	Brushed	125*125*425 mm
AE-12013B	SS #304	Polished	125*125*425 mm
AE-12013M	Steel with Powder coating	Matte Black	125*125*425 mm
AE-12013W	Steel with Powder coating	White	125*125*425 mm



AE-263

### Double Toilet Roll Dispenser

Installation: Wall mounted  
 Volume: Two rolls of toilet tissue roll  
 Accessories: plastic spindles  
 Material Thickness: 22-gauge / 0.8 mm  
 Packing: 12 pcs/ ctn

Item No.	Material	Finished	Dimension (W*D*H)
AE-263SS	SS #304	Brushed	325*81*162 mm
AE-263	SS #304	Polished	325*81*162 mm

### Single Toilet Roll Holder

Installation: Wall mounted  
 Volume: One roll of toilet tissue roll  
 Accessories: Stainless steel spindle  
 Packing: 50 pcs/ ctn



AE-125

Item No.	Material	Finished	Dimension (W*D*H)
AE-125	SS #304	Brushed	125*80*30 mm
AE-125B	SS #304	Polished	125*80*30 mm
AE-125M	Steel with Powder coating	Matte Black	125*80*30 mm
AE-125W	Steel with Powder coating	White	125*80*30 mm

### Single Toilet Roll Holder

Installation: Wall mounted  
 Volume: One roll of toilet tissue roll  
 Accessories: plastic spindle  
 Material Thickness: 22-gauge / 0.8 mm  
 Packing: 50 pcs/ ctn



FD-225

Item No.	Material	Finished	Dimension (W*D*H)
FD-225	SS #304	Polished	125*100*90 mm
FD-225S	SS #304	Brushed	125*100*90 mm
FD-225M	Steel with Powder coating	Matte Black	125*100*90 mm
FD-225W	Steel with Powder coating	White	125*100*90 mm

### Single Toilet Roll Holder

Installation: Wall mounted  
 Volume: One roll of toilet tissue roll  
 Packing: 50 pcs/ ctn



CS-455

Item No.	Material	Finished	Dimension (W*D*H)
CS-455	SS #304	Brushed	108*75*35 mm
CS-455M	304 with Powder coating	Matte Black	108*75*35 mm
CS-455W	304 with Powder coating	White	108*75*35 mm

### Single Toilet Roll Holder

Installation: Wall mounted  
 Volume: One roll of toilet tissue roll  
 Packing: 50 pcs/ ctn



CS-553

**NEW**

Item No.	Material	Finished	Dimension (W*D*H)
CS-553	SS #304	Brushed	126*100*70 mm
CS-553M	304 with Powder coating	Matte Black	126*100*70 mm
CS-553W	304 with Powder coating	White	126*100*70 mm



CS-354

### Single Toilet Roll Holder

Installation: Wall mounted  
 Volume: One roll of toilet tissue roll  
 Packing: 50 pcs/ ctn

Item No.	Material	Finished	Dimension (W*D*H)
CS-354	SS #304	Brushed	152*74*50 mm
CS-354M	304 with Powder coating	Matte Black	152*74*50 mm
CS-354W	304 with Powder coating	White	152*74*50 mm



CS-353

### Single Toilet Roll Holder

Installation: Wall mounted  
 Volume: One roll of toilet tissue roll  
 Packing: 50 pcs/ ctn

Item No.	Material	Finished	Dimension (W*D*H)
CS-353	SS #304	Brushed	126*100*70 mm
CS-353M	304 with Powder coating	Matte Black	126*100*70 mm
CS-353W	304 with Powder coating	White	126*100*70 mm



CS-267

### Single Toilet Roll Holder

Installation: Wall mounted  
 Volume: One roll of toilet tissue roll  
 Packing: 50 pcs/ ctn

Item No.	Material	Finished	Dimension (W*D*H)
CS-267	SS #304	Brushed	143*100*100 mm
CS-267M	304 with Powder coating	Matte Black	143*100*100 mm
CS-267W	304 with Powder coating	White	143*100*100 mm



CS-268

### Double Toilet Roll Holder

Installation: Wall mounted  
 Volume: Two roll of toilet tissue roll  
 Packing: 20 pcs/ ctn

Item No.	Material	Finished	Dimension (W*D*H)
CS-268	SS #304	Brushed	265*102*100 mm
CS-268M	304 with Powder coating	Matte Black	265*102*100 mm
CS-268W	304 with Powder coating	White	265*102*100 mm



AE-595

### Manual Foam Soap Dispenser

Installation: Wall mounted  
 Volume: 1000 ml  
 Accessories: Lock with key, refillable bottle  
 Packing: 20 pcs/ ctn

Item No.	Material	Finished	Dimension (W*D*H)
AE-595	SS #304	Brushed	125*100*250 mm
AE-595B	SS #304	Polished	125*100*250 mm
AE-595M	304 with Powder coating	Matte Black	125*100*250 mm
AE-595W	304 with Powder coating	White	125*100*250 mm



FD-923

### Vertical Manual Soap Dispenser

Installation: Wall mounted  
 Volume: 1200 ml  
 Accessories: Key and mounting plate  
 Packing: 20 pcs/ ctn

Item No.	Material	Finished	Dimension (W*D*H)
FD-923	SS #304	Brushed	125*131*210 mm
FD-923B	SS #304	Polished	125*131*210 mm
FD-923M	304 with Powder coating	Matte Black	125*131*210 mm
FD-923W	304 with Powder coating	White	125*131*210 mm



FD-923PVB

### Vertical Manual Soap Dispenser with v shape plastic valve

Installation: Wall mounted  
 Volume: 1200 ml  
 Accessories: Key and mounting plate  
 Packing: 20 pcs/ ctn

Item No.	Material	Finished	Dimension (W*D*H)
FD-923PVB	SS #304	Brushed	125*95*210 mm
FD-923MPVB	304 with Powder coating	Matte Black	125*95*210 mm
FD-923WPVB	304 with Powder coating	White	125*95*210 mm



FD-923PVS

### Vertical Manual Soap Dispenser with v shape stainless steel plastic valve

Installation: Wall mounted  
 Volume: 1200 ml  
 Accessories: Key and mounting plate  
 Packing: 20 pcs/ ctn

Item No.	Material	Finished	Dimension (W*D*H)
FD-923PVS	SS #304	Brushed	125*95*210 mm
FD-923MPVS	304 with Powder coating	Matte Black	125*95*210 mm
FD-923WPVS	304 with Powder coating	White	125*95*210 mm



FD-913

### Horizontal Manual Soap Dispenser

Installation: Wall mounted  
 Volume: 1200 ml  
 Accessories: Key and mounting plate  
 Packing: 20 pcs/ ctn

Item No.	Material	Finished	Dimension (W*D*H)
FD-913	SS #304	Brushed	210*131*125 mm
FD-913B	SS #304	Polished	210*131*125 mm
FD-913M	304 with Powder coating	Matte Black	210*131*125 mm
FD-913W	304 with Powder coating	White	210*131*125 mm



FD-913PVB

### Horizontal Manual Soap Dispenser with v shape plastic valve

Installation: Wall mounted  
 Volume: 1200 ml  
 Accessories: Key and mounting plate  
 Packing: 20 pcs/ ctn

Item No.	Material	Finished	Dimension (W*D*H)
FD-913PVB	SS #304	Brushed	210*95*125 mm
FD-913MPVB	304 with Powder coating	Matte Black	210*95*125 mm
FD-913WPVB	304 with Powder coating	White	210*95*125 mm



FD-913PVS

### Horizontal Manual Soap Dispenser with v shape stainless steel plastic valve

Installation: Wall mounted  
 Volume: 1200 ml  
 Accessories: Key and mounting plate  
 Packing: 20 pcs/ ctn

Item No.	Material	Finished	Dimension (W*D*H)
FD-913PVS	SS #304	Brushed	210*95*125 mm
FD-913MPVS	304 with Powder coating	Matte Black	210*95*125 mm
FD-913WPVS	304 with Powder coating	White	210*95*125 mm



AE-933

### Recessed Manual Soap Dispenser

Installation: Recessed wall mounted  
 Wall opening: 225\*110\*120 mm  
 Volume: 1200 ml  
 Accessories: Key  
 Packing: 10 pcs/ ctn

Item No.	Material	Finished	Dimension (W*D*H)
AE-933	SS #304	Brushed	259*110*150 mm
AE-933M	304 with Powder coating	Matte Black	259*110*150 mm
AE-933W	304 with Powder coating	White	259*110*150 mm



AE-713

### Square Manual Soap Dispenser

Installation: Wall mounted  
 Volume: 1200 ml  
 Accessories: Key and mounting plate  
 Packing: 20 pcs/ ctn

Item No.	Material	Finished	Dimension (W*D*H)
AE-713	SS #304	Brushed	183*129*163 mm
AE-713B	SS #304	Polished	183*129*163 mm
AE-713M	304 with Powder coating	Matte Black	183*129*163 mm
AE-713W	304 with Powder coating	White	183*129*163 mm



FD-628

### Countertop Manual Soap Dispenser

Installation: Counter top mounted  
 Volume: 1000 ml  
 Accessories: Key and refillable bottle  
 Packing: 30 pcs/ ctn

Item No.	Material	Finished	Dimension (W*D*H)
FD-628-4	SS #304 and copper	Polished	4"*60 mm
FD-628-5	SS #304 and copper	Polished	5"*60 mm
FD-628-6	SS #304 and copper	Polished	6"*60 mm



AE-713PRB

### Square Manual Soap Dispenser with rectangular shape plastic valve

Installation: Wall mounted  
 Volume: 1200 ml  
 Accessories: Key and mounting plate  
 Packing: 20 pcs/ ctn

Item No.	Material	Finished	Dimension (W*D*H)
AE-713PRB	SS #304	Brushed	183*95*163 mm
AE-713MPRB	304 with Powder coating	Matte Black	183*95*163 mm
AE-713WPRB	304 with Powder coating	White	183*95*163 mm



FD-628M

### Countertop Manual Soap Dispenser

Installation: Counter top mounted  
 Volume: 1000 ml  
 Accessories: Key and refillable bottle  
 Packing: 30 pcs/ ctn

Item No.	Material	Finished	Dimension (W*D*H)
FD-628M-4	SS#304& copper with PVD	Matte black	4"*60 mm
FD-628M-5	SS#304& copper with PVD	Matte black	5"*60 mm
FD-628M-6	SS#304& copper with PVD	Matte black	6"*60 mm



AE-713PRS

### Square Manual Soap Dispenser with rectangular shape SS plastic valve

Installation: Wall mounted  
 Volume: 1200 ml  
 Accessories: Key and mounting plate  
 Packing: 20 pcs/ ctn

Item No.	Material	Finished	Dimension (W*D*H)
AE-713PRS	SS #304	Brushed	183*95*163 mm
AE-713MPRS	304 with Powder coating	Matte Black	183*95*163 mm
AE-713WPRS	304 with Powder coating	White	183*95*163 mm



FD-638

### Countertop Manual Foam Soap Dispenser

Installation: Counter top mounted  
 Volume: 1000 ml  
 Accessories: Key and refillable bottle  
 Packing: 30 pcs/ ctn

Item No.	Material	Finished	Dimension (W*D*H)
FD-638-4	SS #304 and copper	Polished	4"*60 mm
FD-638-5	SS #304 and copper	Polished	5"*60 mm
FD-638-6	SS #304 and copper	Polished	6"*60 mm

### Vertical Manual Soap Dispenser

Installation: Wall mounted  
 Volume: 500 ml  
 Accessories: Key and mounting plate  
 Packing: 20 pcs/ ctn

Item No.	Material	Finished	Dimension (W*D*H)
AE-7635	SS #304	Brushed	90*114*162 mm
AE-7635B	SS #304	Polished	90*114*162 mm
AE-7635M	304 with Powder coating	Matte Black	90*114*162 mm
AE-7635W	304 with Powder coating	White	90*114*162 mm



AE-7635



FD-516C

### Countertop Manual Foam Soap Dispenser

Installation: Counter top mounted  
 Volume: 400 ml  
 Accessories: Key and refillable bottle  
 Packing: 50 pcs/ ctn

Item No.	Material	Finished	Dimension (W*D*H)
FD-516C	SS #304 and copper	Polished	4"*60 mm



AE-620-1

### GLOVE DISPENSER - SINGLE

Installation: Wall mounted  
 Loading: Top load or Side load  
 Material Thickness: 22-gauge / 0.8 mm  
 Volume: 1 box  
 Packing: 12 pcs/ ctn

**NEW**

Item No.	Material	Finished	Dimension (W*D*H)
AE-620-1	SS #304	Brushed	146*97*252 mm
AE-620W-1	Steel with Powder coating	White	146*97*252 mm
AE-620M-1	Steel with Powder coating	Black	146*97*252 mm

Customise sizes are available upon request.



AE-620-2

### GLOVE DISPENSER - DOUBLE

Installation: Wall mounted  
 Loading: Top load or Side load  
 Material Thickness: 22-gauge / 0.8 mm  
 Volume: 2 boxes  
 Packing: 8 pcs/ ctn

**NEW**

Item No.	Material	Finished	Dimension (W*D*H)
AE-620-2	SS #304	Brushed	262*100*250 mm
AE-620W-2	Steel with Powder coating	White	262*100*250 mm
AE-620M-2	Steel with Powder coating	Black	262*100*250 mm

Customise sizes are available upon request.



AE-620-3

### GLOVE DISPENSER - TRIPLE

Installation: Wall mounted  
 Loading: Top load or Side load  
 Material Thickness: 22-gauge / 0.8 mm  
 Volume: 3 boxes  
 Packing: 8 pcs/ ctn

**NEW**

Item No.	Material	Finished	Dimension (W*D*H)
AE-620-3	SS #304	Brushed	262*100*363 mm
AE-620W-3	Steel with Powder coating	White	262*100*363 mm
AE-620M-3	Steel with Powder coating	Black	262*100*363 mm

Customise sizes are available upon request.



AE-620-4

### GLOVE DISPENSER - QUAD.

Installation: Wall mounted  
 Loading: Top load or Side load  
 Material Thickness: 22-gauge / 0.8 mm  
 Volume: 4 boxes  
 Packing: 6 pcs/ ctn

**NEW**

Item No.	Material	Finished	Dimension (W*D*H)
AE-620-4	SS #304	Brushed	262*100*490 mm
AE-620W-4	Steel with Powder coating	White	262*100*490 mm
AE-620M-4	Steel with Powder coating	Black	262*100*490 mm

Customise sizes are available upon request.



AE-622-4

### GLOVE DISPENSER CABINET - QUAD.

Installation: Wall mounted  
 Loading: Front loading  
 Material Thickness: 22-gauge / 0.8 mm  
 Volume: 4 boxes  
 Packing: 4 pcs/ ctn

Item No.	Material	Finished	Dimension (W*D*H)
AE-622-4	SS #304	Brushed	262*100*490 mm
AE-622W-4	Steel with Powder coating	White	262*100*490 mm
AE-622M-4	Steel with Powder coating	Black	262*100*490 mm



AE-623

### FACE MASK DISPENSER

Installation: Wall mounted  
 Loading: Top load  
 Material Thickness: 22-gauge / 0.8 mm  
 Volume: 1 box  
 Packing: 12 pcs/ ctn

Item No.	Material	Finished	Dimension (W*D*H)
AE-623	SS #304	Brushed	195*105*250 mm
AE-623W	Steel with Powder coating	White	195*105*250 mm
AE-623M	Steel with Powder coating	Black	195*105*250 mm



AE-624

### FACE MASK DISPENSER

Installation: Wall mounted  
 Loading: Top load  
 Material Thickness: 22-gauge / 0.8 mm  
 Volume: 1 box  
 Packing: 12 pcs/ ctn

Item No.	Material	Finished	Dimension (W*D*H)
AE-624	SS #304	Brushed	250*102*307 mm
AE-624W	Steel with Powder coating	White	250*102*307 mm
AE-624M	Steel with Powder coating	Black	250*102*307 mm





AE-109

### FOOT PEDAL ROUND WASTE BIN

Volume: 3 Liter / 0.8 Gallon  
Packing: 6 pcs/ ctn

Item No.	Material	Finished	Dimension (W*D*H)
AE-109	SS #430	Polished	Ø162*250 mm
AE-109W	Steel with Powder coating	White	Ø162*250 mm
AE-109M	Steel with Powder coating	Black	Ø162*250 mm



AE-121Y

### FOOT PEDAL RECTANGULAR WASTE BIN

Volume: 18 Liter / 4.8 Gallon  
Packing: 4 pcs/ ctn

Item No.	Material	Finished	Dimension (W*D*H)
AE-121Y	SS #410	Polished	303*350*450 mm
AE-121W	Steel with Powder coating	White	303*350*450 mm
AE-121M	Steel with Powder coating	Black	303*350*450 mm



AE-110Y

### FOOT PEDAL ROUND WASTE BIN

Volume: 5 Liter / 1.32 Gallon  
Packing: 6 pcs/ ctn

Item No.	Material	Finished	Dimension (W*D*H)
AE-110Y	SS #430	Polished	Ø208*325 mm
AE-110W	Steel with Powder coating	White	Ø208*325 mm
AE-110M	Steel with Powder coating	Black	Ø208*325 mm



AE-122Y

### FOOT PEDAL RECTANGULAR WASTE BIN

Volume: 28 Liter / 7.4 Gallon  
Packing: 2 pcs/ ctn

Item No.	Material	Finished	Dimension (W*D*H)
AE-122Y	SS #410	Polished	303*350*617 mm
AE-122W	Steel with Powder coating	White	303*350*617 mm
AE-122M	Steel with Powder coating	Black	303*350*617 mm



AE-111Y

### FOOT PEDAL ROUND WASTE BIN

Volume: 12 Liter / 3 Gallon  
Packing: 4 pcs/ ctn

Item No.	Material	Finished	Dimension (W*D*H)
AE-111Y	SS #430	Polished	Ø245*386 mm
AE-111W	Steel with Powder coating	White	Ø245*386 mm
AE-111M	Steel with Powder coating	Black	Ø245*386 mm



AE-130Y

### FOOT PEDAL RECYCLE BIN

Volume: 18 Liter\*2 / 4.8 Gallon\*2  
Packing: 1 pcs/ ctn

Item No.	Material	Finished	Dimension (W*D*H)
AE-130Y	SS #410	Polished	584*354*440 mm
AE-130W	Steel with Powder coating	White	584*354*440 mm
AE-130M	Steel with Powder coating	Black	584*354*440 mm



AE-112Y

### FOOT PEDAL ROUND WASTE BIN

Volume: 28 Liter / 7.4 Gallon  
Packing: 2 pcs/ ctn

Item No.	Material	Finished	Dimension (W*D*H)
AE-112Y	SS #430	Polished	Ø305*532 mm
AE-112W	Steel with Powder coating	White	Ø305*532 mm
AE-112M	Steel with Powder coating	Black	Ø305*532 mm



AE-131Y

### FOOT PEDAL RECYCLE BIN

Volume: 28 Liter\*2 / 7.4 Gallon\*2  
Packing: 1 pcs/ ctn

Item No.	Material	Finished	Dimension (W*D*H)
AE-131Y	SS #410	Polished	584*354*630 mm
AE-131W	Steel with Powder coating	White	584*354*630 mm
AE-131M	Steel with Powder coating	Black	584*354*630 mm



AE-101

### FLAP TOP ROUND WASTE BIN

Volume: 1.5 Liter / 0.4 Gallon  
Packing: 24 pcs/ ctn

Item No.	Material	Finished	Dimension (W*D*H)
AE-101	SS #430 and SS # 304 lid	Polished	Ø130*170 mm
AE-101W	Steel with Powder coating	White	Ø130*170 mm
AE-101M	Steel with Powder coating	Black	Ø130*170 mm



AE-102Y

### FLAP TOP ROUND WASTE BIN

Volume: 10 Liter / 2.64 Gallon  
Packing: 6 pcs/ ctn

Item No.	Material	Finished	Dimension (W*D*H)
AE-102Y	SS #430 and SS # 304 lid	Polished	Ø210*410 mm
AE-102W	Steel with Powder coating	White	Ø210*410 mm
AE-102M	Steel with Powder coating	Black	Ø210*410 mm



AE-103Y

### FLAP TOP ROUND WASTE BIN

Volume: 18 Liter / 4.8 Gallon  
Packing: 4 pcs/ ctn

Item No.	Material	Finished	Dimension (W*D*H)
AE-103Y	SS #430 and SS # 304 lid	Polished	Ø250*480 mm
AE-103W	Steel with Powder coating	White	Ø250*480 mm
AE-103M	Steel with Powder coating	Black	Ø250*480 mm



AE-105Y

### FLAP TOP ROUND WASTE BIN

Volume: 32 Liter / 8.4 Gallon  
Packing: 2 pcs/ ctn

Item No.	Material	Finished	Dimension (W*D*H)
AE-105Y	SS #430 and SS # 304 lid	Polished	Ø300*650 mm
AE-105W	Steel with Powder coating	White	Ø300*650 mm
AE-105M	Steel with Powder coating	Black	Ø300*650 mm



AE-922

### WALL MOUNTED WASTE BIN

Installation: Wall mounted or floor  
Material Thickness: 22-gauge / 0.8 mm  
Volume: 7 Liter / 1.9 Gallon  
Packing: 1 pcs/ ctn

Item No.	Material	Finished	Dimension (W*D*H)
AE-922	SS #304	Brushed	270*125*230 mm
AE-922W	Steel with Powder coating	White	270*125*230 mm
AE-922M	Steel with Powder coating	Black	270*125*230 mm



AE-921

### WALL MOUNTED WASTE BIN

Installation: Wall mounted or floor  
Material Thickness: 22-gauge / 0.8 mm  
Volume: 23 Liter / 6.5 Gallon  
Packing: 1 pcs/ ctn

Item No.	Material	Finished	Dimension (W*D*H)
AE-921	SS #304	Brushed	355*158*435 mm
AE-921W	Steel with Powder coating	White	355*158*435 mm
AE-921M	Steel with Powder coating	Black	355*158*435 mm



AE-926

### WALL MOUNTED WASTE BIN

Installation: Wall mounted or floor  
Material Thickness: 22-gauge / 0.8 mm  
Volume: 24 Liter / 6.5 Gallon  
Packing: 1 pcs/ ctn

Item No.	Material	Finished	Dimension (W*D*H)
AE-926	SS #304	Brushed	300*180*450 mm
AE-926W	Steel with Powder coating	White	300*180*450 mm
AE-926M	Steel with Powder coating	Black	300*180*450 mm



AE-926-32

### WALL MOUNTED WASTE BIN

Installation: Wall mounted or floor  
Material Thickness: 22-gauge / 0.8 mm  
Volume: 32 Liter / 8.5 Gallon  
Packing: 1 pcs/ ctn

Item No.	Material	Finished	Dimension (W*D*H)
AE-926-32	SS #304	Brushed	300*180*600 mm
AE-926W-32	Steel with Powder coating	White	300*180*600 mm
AE-926M-32	Steel with Powder coating	Black	300*180*600 mm



AE-203

### WALL MOUNTED WASTE BIN

Installation: Wall mounted or floor  
 Material Thickness: 22-gauge / 0.8 mm  
 Volume: 23 Liter / 6.5 Gallon  
 Packing: 1 pcs/ ctn

**NEW**

Item No.	Material	Finished	Dimension (W*D*H)
AE-203	SS #304	Brushed	294*175*462 mm
AE-203W	Steel with Powder coating	White	294*175*462 mm
AE-203M	Steel with Powder coating	Black	294*175*462 mm

Customise sizes are available upon request.



AE-206

### CORNER WASTE BIN

Installation: Wall mounted or floor  
 Material Thickness: 22-gauge / 0.8 mm  
 Volume: 23 Liter / 6.5 Gallon  
 Packing: 1 pcs/ ctn

**NEW**

Item No.	Material	Finished	Dimension (W*D*H)
AE-206	SS #304	Brushed	250*250*463 mm
AE-206W	Steel with Powder coating	White	250*250*463 mm
AE-206M	Steel with Powder coating	Black	250*250*463 mm

Customise sizes are available upon request.



AE-204

### WALL MOUNTED WASTE BIN

Installation: Wall mounted or floor  
 Material Thickness: 22-gauge / 0.8 mm  
 Volume: 45 Liter / 12 Gallon  
 Packing: 1 pcs/ ctn

**NEW**

Item No.	Material	Finished	Dimension (W*D*H)
AE-204	SS #304	Brushed	369*220*580 mm
AE-204W	Steel with Powder coating	White	369*220*580 mm
AE-204M	Steel with Powder coating	Black	369*220*580 mm

Customise sizes are available upon request.



AE-207

### CORNER WASTE BIN

Installation: Wall mounted or floor  
 Material Thickness: 22-gauge / 0.8 mm  
 Volume: 45 Liter / 12 Gallon  
 Packing: 1 pcs/ ctn

**NEW**

Item No.	Material	Finished	Dimension (W*D*H)
AE-207	SS #304	Brushed	313*313*578 mm
AE-207W	Steel with Powder coating	White	313*313*578 mm
AE-207M	Steel with Powder coating	Black	313*313*578 mm

Customise sizes are available upon request.



AE-205

### WALL MOUNTED WASTE BIN

Installation: Wall mounted or floor  
 Material Thickness: 22-gauge / 0.8 mm  
 Volume: 60 Liter / 15.9 Gallon  
 Packing: 1 pcs/ ctn

Item No.	Material	Finished	Dimension (W*D*H)
AE-205	SS #304	Brushed	406*241*637 mm
AE-205W	Steel with Powder coating	White	406*241*637 mm
AE-205M	Steel with Powder coating	Black	406*241*637 mm

Customise sizes are available upon request.



AE-208

### CORNER WASTE BIN

Installation: Wall mounted or floor  
 Material Thickness: 22-gauge / 0.8 mm  
 Volume: 60 Liter / 15.9 Gallon  
 Packing: 1 pcs/ ctn

Item No.	Material	Finished	Dimension (W*D*H)
AE-208	SS #304	Brushed	344*344*636 mm
AE-208W	Steel with Powder coating	White	344*344*636 mm
AE-208M	Steel with Powder coating	Black	344*344*636 mm

Customise sizes are available upon request.





AE-003

### CIRCULAR WASTE CHUTE

Installation: Counter top mounted  
Packing: 20 pcs/ ctn

Item No.	Material	Finished	Dimension (W*D*H)
AE-003	SS #304	Polished	Ø170*90 mm
AE-003SS	SS #304	Brushed	Ø170*90 mm



AE-910

### FEMININE SANITARY BIN

Installation: Wall mounted  
Material Thickness: 22-gauge / 0.8 mm  
Volume: 7 Liter / 1.9 Gallon  
Packing: 6 pcs/ ctn

Item No.	Material	Finished	Dimension (W*D*H)
AE-910	SS #304	Brushed	235*108*280 mm
AE-910W	Steel with Powder coating	White	235*108*280 mm
AE-910M	Steel with Powder coating	Black	235*108*280 mm



AE-013

### CIRCULAR WASTE CHUTE WITH LID

Installation: Counter top mounted  
Packing: 20 pcs/ ctn

Item No.	Material	Finished	Dimension (W*D*H)
AE-013	SS #304	Polished	Ø170*90 mm
AE-013SS	SS #304	Brushed	Ø170*90 mm



AE-920

### WALL MOUNTED ASHTRAY

Installation: Wall mounted  
Material Thickness: 22-gauge / 0.8 mm  
Volume: 7 Liter / 1.9 Gallon  
Packing: 6 pcs/ ctn

Item No.	Material	Finished	Dimension (W*D*H)
AE-920	SS #304	Brushed	305*125*230 mm
AE-920W	Steel with Powder coating	White	305*125*230 mm
AE-920M	Steel with Powder coating	Black	305*125*230 mm



302-A

### RECTANGULAR WASTE BIN WITH SWING TOP LID

Volume: 42Liter / 11 Gallon  
Volume: 28Liter / 7.4 Gallon  
Packing: 1 pcs/ ctn

Item No.	Material	Finished	Dimension (W*D*H)
302-A	SS #304	Polished	350*200*600 mm
302-A1	SS #304	Polished	350*200*400 mm



AE-106Y

### ROUND WASTE BIN WITH ASHTRAY

Volume: 17 Liter / 4.5 Gallon  
Packing: 4 pcs/ ctn

Item No.	Material	Finished	Dimension (W*D*H)
AE-106Y	SS #430	Polished	Ø250*610 mm
AE-106BY	Steel with Powder coating	Black	Ø250*610 mm



302-B

### RECTANGULAR WASTE BIN

Volume: 42Liter / 11 Gallon  
Volume: 28Liter / 7.4 Gallon  
Packing: 1 pcs/ ctn

Item No.	Material	Finished	Dimension (W*D*H)
302-B	SS #304	Polished	350*200*600 mm
302-B1	SS #304	Polished	350*200*400 mm



202-A

### ROUND WASTE BIN WITH ASHTRAY

Volume: 36 Liter / 9.6 Gallon  
Packing: 1 pcs/ ctn

Item No.	Material	Finished	Dimension (W*D*H)
202-A	SS #304	Brushed	Ø310*750 mm



CP-520L

### NON-AEROSOL DISPENSER

Installation: Wall mounted or desktop standing  
 Battery: Alkaline battery AA\* 2pcs  
 Volume: 300ml round bottle  
 Refill: FD-520T  
 Packing: 30 pcs/ ctn

**NEW**

Item No.	Material	Finished	Dimension (W*D*H)
CP-520L	PP Cover and ABS	White	76*85*210 mm
CP-520L-G	PP Cover and ABS	Grey	76*85*210 mm
CP-520L-B	PP Cover and ABS	Black	76*85*210 mm



FD-696-1

### AUTOMATIC SOAP DISPENSER - FOAM

Installation: Wall mounted  
 Pump: Foam Soap  
 Battery: Alkaline battery AA\* 4pcs  
 Volume: 1000ml  
 Refill: Refillable bottle or Disposable Sachet  
 Packing: 12 pcs/ ctn

**NEW**

Item No.	Material	Finished	Dimension (W*D*H)
FD-696-1	PP Cover and ABS	White	135*104*260 mm
FD-696M-1	PP Cover and ABS	Black	135*104*260 mm



FD-620L

### NON-AEROSOL DISPENSER

Installation: Wall mounted or desktop standing  
 Battery: Alkaline battery AA\* 2pcs  
 Volume: 300ml Square bottle  
 Refill: FD-420T  
 Packing: 30 pcs/ ctn

**WORK IN PROGRESS**

Item No.	Material	Finished	Dimension (W*D*H)
FD-620L	PP Cover and ABS	White	128*62*225 mm
FD-620L-G	PP Cover and ABS	Grey	128*62*225 mm
FD-620L-B	PP Cover and ABS	Black	128*62*225 mm



FD-696-2

### AUTOMATIC SOAP DISPENSER - LIQUID

Installation: Wall mounted  
 Pump: Liquid Soap  
 Battery: Alkaline battery AA\* 4pcs  
 Volume: 1000ml  
 Refill: Refillable bottle or Disposable Sachet  
 Packing: 12 pcs/ ctn

**NEW**

Item No.	Material	Finished	Dimension (W*D*H)
FD-696-2	PP Cover and ABS	White	135*104*260 mm
FD-696M-2	PP Cover and ABS	Black	135*104*260 mm



FD-220L

### NON-AEROSOL DISPENSER

Installation: Wall mounted or desktop standing  
 Battery: Alkaline battery D\* 2pcs  
 Volume: 300ml Square bottle  
 Refill: FD-220T  
 Packing: 30 pcs/ ctn

Item No.	Material	Finished	Dimension (W*D*H)
FD-220L	ABS	White	120*81*220 mm
FD-220L-G	ABS	Grey	120*81*220 mm
FD-220DPL	PP Cover and ABS	White	120*81*220 mm



FD-696-3

### AUTOMATIC HAND SANITIZER DISPENSER

Installation: Wall mounted  
 Pump: Spray  
 Battery: Alkaline battery AA\* 4pcs  
 Volume: 1000ml  
 Refill: Refillable bottle or Disposable Sachet  
 Packing: 12 pcs/ ctn

**NEW**

Item No.	Material	Finished	Dimension (W*D*H)
FD-696-3	PP Cover and ABS	White	135*104*260 mm
FD-696M-3	PP Cover and ABS	Black	135*104*260 mm



FD-420L

### NON-AEROSOL DISPENSER

Installation: Wall mounted or desktop standing  
 Battery: Alkaline battery D\* 2pcs  
 Volume: 300ml Square bottle  
 Refill: FD-220T  
 Packing: 30 pcs/ ctn

Item No.	Material	Finished	Dimension (W*D*H)
FD-420L	ABS	White	115*80*215 mm
FD-420DPL	PP Cover and ABS	White	115*80*215 mm



FD-690

### DISPENSER DESKTOP STAND

Installation: Desktop  
 Packing: 12 pcs/ ctn

Item No.	Material	Finished	Dimension (W*D*H)
FD-690	ABS and Aluminium	White	76*85*210 mm



CP-692

### AUTOMATIC SOAP DISPENSER

Installation: Wall mounted  
 Pump: Three options  
 Battery: Alkaline battery C\* 4pcs  
 Volume: 1000ml  
 Refill: Refillable bottle  
 Packing: 12 pcs/ ctn

Item No.	Material	Pump	Dimension (W*D*H)
CP-692-1	ABS and Aluminium	Foam	140*120*280 mm
CP-692-2	ABS and Aluminium	Liquid	140*120*280 mm
CP-692-3	ABS and Aluminium	Spray	140*120*280 mm



CS-695

### AUTOMATIC SOAP DISPENSER

Installation: Wall mounted  
 Pump: Three options  
 Battery: Alkaline battery C\* 4pcs  
 Volume: 1000ml  
 Refill: Refillable bottle  
 Packing: 12 pcs/ ctn

Item No.	Material	Pump	Dimension (W*D*H)
CS-695-1	Aluminium and ABS	Foam	123*115*280 mm
CS-695-2	Aluminium and ABS	Liquid	123*115*280 mm
CS-695-3	Aluminium and ABS	Spray	123*115*280 mm



MSD12S

### AUTOMATIC SOAP DISPENSER

Installation: Wall mounted  
 Pump: Three options  
 Battery: Alkaline battery AA\* 4pcs  
 Volume: 800ml  
 Refill: Refillable bottle or Disposable Sachet  
 Packing: 12 pcs/ ctn

Item No.	Material	Pump	Dimension (W*D*H)
MSD12S	SS#304 and ABS	Liquid	108*107*268 mm
MSD22S	SS#304 and ABS	Foam	108*107*268 mm
MSD32S	SS#304 and ABS	Spray	108*107*268 mm



MSD11

### AUTOMATIC SOAP DISPENSER

Installation: Wall mounted  
 Pump: Three options  
 Battery: Alkaline battery AA\* 4pcs  
 Volume: 800ml  
 Refill: Refillable bottle or Disposable Sachet  
 Packing: 12 pcs/ ctn

Item No.	Material	Pump	Dimension (W*D*H)
MSD11	SS#304 and ABS	Liquid	122*106*270 mm
MSD21	SS#304 and ABS	Foam	122*106*270 mm
MSD31	SS#304 and ABS	Spray	122*106*270 mm



CS-D006

### HEPA AUTOMATIC HAND DRYER

With HEPA 13 Filter  
 Drying Time: 10 seconds  
 Operating Voltage: 110-120Vac, 50/60 Hz, 0.84-0.92kW  
 Operating Voltage: 220-240Vac, 50/60 Hz, 0.84-0.92kW  
 Standby Power: < 1 W  
 Timing Protection: 50 seconds auto shut off  
 Sound Level: 68.6 dB MAX @ 1m  
 Air Speed: 100 m/s  
 Sensing range: 45 Degree 150-250 mm, adjustable  
 Packing: 4 pcs/ ctn

Item No.	Material	Finished	Dimension (W*D*H)
CS-D006	SS #304	Brushed	286*122.5*321 mm
CS-D006W	SS#304 with Powder coating	White	286*122.5*321 mm
CS-D006M	SS#304 with Powder coating	Matte Black	286*122.5*321 mm



CS-D56

### AUTOMATIC HAND DRYER

Drying Time: 12 seconds  
 Operating Voltage: 110-120Vac, 50/60 Hz, 0.84-0.92kW  
 Operating Voltage: 220-240Vac, 50/60 Hz, 0.84-0.92kW  
 Standby Power: 0.5W  
 Timing Protection: 50 seconds auto shut off  
 Sound Level: 68.6 dB MAX @ 1m  
 Air Speed: 100 m/s  
 Sensing range: 45 Degree 150-250 mm, adjustable  
 Drip Proof: IPX3  
 Packing: 4 pcs/ ctn

Item No.	Material	Finished	Dimension (W*D*H)
CS-D56	SS #304	Brushed	175*116*256mm
CS-D56W	SS#304 with Powder coating	White	175*116*256mm
CS-D56M	SS#304 with Powder coating	Matte Black	175*116*256mm



CS-D51

### HEPA AUTOMATIC HAND DRYER

With HEPA 13 Filter  
 Drying Time: 12 seconds  
 Operating Voltage: 110-120Vac, 50/60 Hz, 0.84-0.92kW  
 Operating Voltage: 220-240Vac, 50/60 Hz, 0.84-0.92kW  
 Standby Power: 0.5W  
 Timing Protection: 50 seconds auto shut off  
 Sound Level: 68.6 dB MAX @ 1m  
 Air Speed: 100 m/s  
 Sensing range: 45 Degree 150-250 mm, adjustable  
 Packing: 4 pcs/ ctn

Item No.	Material	Finished	Dimension (W*D*H)
CS-D51	SS #304	Brushed	287*110*322 mm
CS-D51W	SS#304 with Powder coating	White	287*110*322 mm
CS-D51M	SS#304 with Powder coating	Matte Black	287*110*322 mm



CS-D20W

### HEPA AUTOMATIC HAND DRYER

With HEPA 13 Filter  
 With Odor Neutralizing Tablet  
 With Water collection reservoir  
 Brushless Motor  
 Drying Time: 8 seconds  
 Operating Voltage: 110-120Vac, 50/60 Hz, 0.7-1.0 kW  
 Operating Voltage: 220-240Vac, 50/60 Hz, 0.7-1.0kW  
 Standby Power: < 1 W  
 Timing Protection: 20 seconds auto shut off  
 Sound Level: 68.6 dB MAX @ 1m  
 Air Speed: 155 m/s  
 Packing: 1 pcs/ ctn



Item No.	Material	Finished	Dimension (W*D*H)
CS-D20W	ABS	White	300*230*630 mm
CS-D20G	ABS	Grey	300*230*630 mm



EcoFast05

### AUTOMATIC HAND DRYER

Drying Time: 9 seconds (According to hand dryer PCR)  
 Operating Voltage: 110-120Vac, 50/60 Hz, 0.84-1.0kW  
 Operating Voltage: 220-240Vac, 50/60 Hz, 0.84-1.0kW  
 Standby Power: 0.3-0.4W  
 Timing Protection: 60 seconds auto shut off  
 Sound Level: MIN 67.4 dB to 71.2 dB MAX @ 1m  
 Air Speed: 52-90 m/s, adjustable  
 Sensing range: 170 mm ± 20 mm, adjustable  
 Drip Proof: IP11/IP13 (optional)  
 Packing: 4 pcs/ ctn

Item No.	Material	Finished	Dimension (W*D*H)
EcoFast05	SS #304	Brushed	250*138*170 mm
EcoFast01	Powder coating	White	250*138*170 mm
EcoFast01B	Powder coating	Matte Black	250*138*170 mm



EcoMo11

### HEPA AUTOMATIC HAND DRYER

With HEPA 13 Filter  
 Drying Time: 8 seconds (According to hand dryer PCR)  
 Operating Voltage: 110-120Vac, 50/60 Hz, 1.34-1.6kW  
 Operating Voltage: 220-240Vac, 50/60 Hz, 1.34-1.6kW  
 Standby Power: 0.3-0.4W  
 Timing Protection: 60-second auto shut off  
 Sound Level: MIN 69.6dB to 72.8 dB MAX @ 1 m  
 Air Speed: 75-95 m/s (169-212.5 mi/hr), adjustable  
 Sensing range: 150 mm ± 20 mm, adjustable  
 Packing: 1 pcs/ ctn

Item No.	Material	Finished	Dimension (W*D*H)
EcoMo11	ABS	White	322*185*587.5 mm
EcoMo12	ABS	Silver	322*185*587.5 mm



EcoSlender01

### AUTOMATIC HAND DRYER

Drying Time: 12 seconds (According to hand dryer PCR)  
 Operating Voltage: 110-120Vac, 50/60 Hz, 0.84-1.0kW  
 Operating Voltage: 220-240Vac, 50/60 Hz, 0.84-1.0kW  
 Standby Power: 0.3-0.4W  
 Timing Protection: 60 seconds auto shut off  
 Sound Level: MIN 72.8 dB to 77.6 dB MAX @ 1m  
 Air Speed: 70-82 m/s, adjustable  
 Sensing range: 170 mm ± 20 mm, adjustable  
 Drip Proof: IP24  
 Packing: 4 pcs/ ctn

Item No.	Material	Finished	Dimension (W*D*H)
EcoSlender05	SS #304	Brushed	275*100*216 mm
EcoSlender01	Powder coating	White	275*100*216 mm
EcoSlender01B	Powder coating	Matte Black	275*100*216 mm



EcoSwift05

### AUTOMATIC HAND DRYER

Drying Time: 10 seconds (According to UL hand dryer PCR)  
 Operating Voltage: 110-120Vac, 50/60 Hz, 0.84-1.0kW  
 Operating Voltage: 220-240Vac, 50/60 Hz, 0.84-1.0kW  
 Standby Power: 0.3-0.4W  
 Timing Protection: 60 seconds auto shut off  
 Sound Level: MIN 68.6 dB to 72.3 MAX @ 1m  
 Air Speed: 65-92 m/s, adjustable  
 Sensing range: 170 mm ± 20 mm, adjustable  
 \*\*ADA-Compliant  
 Packing: 4 pcs/ ctn



Item No.	Material	Finished	Dimension (W*D*H)
EcoSwift05	SS #304	Brushed	152*100*268 mm
EcoSwift01	Powder coating	White	152*100*268 mm
EcoSwift01B	Powder coating	Matte Black	152*100*268 mm



T-728-1S

### ULTRA LONGLIFE BATTERY SENSOR FAUCET

Power Supply: Battery type (battery lifetime 6-8 years)  
 Water output option: only cold water or warm/ cold water  
 Distance from mounting hole to water outlet: 100mm  
 Applicable basin faucet hole: 30mm-40mm  
 Sensing distance: 10-12cm (hand measurement)  
 Standby power saving mode  
 Low voltage LED flashing device (battery type)

**NEW**

Item No.	Material	Finished	Dimension (W*D*H)
T-728-1S	Brass with chrome plated	Polished	H 200mm
T-728M-1S	Powder coating	Matte Black	H 200mm



T-728-2S

### ULTRA LONGLIFE BATTERY SENSOR FAUCET

Power Supply: Battery type (battery lifetime 6-8 years)  
 Water output option: only cold water or warm/ cold water  
 Distance from mounting hole to water outlet: 300mm  
 Applicable basin faucet hole: 30mm-40mm  
 Sensing distance: 10-12cm (hand measurement)  
 Standby power saving mode  
 Low voltage LED flashing device (battery type)

**NEW**

Item No.	Material	Finished	Dimension (W*D*H)
T-728-2S	Brass with chrome plated	Polished	H 400mm
T-728M-2S	Powder coating	Matte Black	H 400mm



T-728-1

### AUTOMATIC SENSOR FAUCET

Power Supply: Battery type or DC type  
 Water output option: only cold water or warm/ cold water  
 Distance from mounting hole to water outlet: 100mm  
 Applicable basin faucet hole: 30mm-40mm  
 Sensing distance: 10-12cm (hand measurement)  
 Standby power saving mode  
 Low voltage LED flashing device (battery type)

Item No.	Material	Finished	Dimension (W*D*H)
T-728-1	Brass with chrome plated	Polished	H 200mm
T-728M-1	Powder coating	Matte Black	H 200mm



T-728-2

### AUTOMATIC SENSOR FAUCET

Power Supply: Battery type or DC type  
 Water output option: only cold water or warm/ cold water  
 Distance from mounting hole to water outlet: 300mm  
 Applicable basin faucet hole: 30mm-40mm  
 Sensing distance: 10-12cm (hand measurement)  
 Standby power saving mode  
 Low voltage LED flashing device (battery type)

Item No.	Material	Finished	Dimension (W*D*H)
T-728-2	Brass with chrome plated	Polished	H 400mm
T-728M-2	Powder coating	Matte Black	H 400mm



FD-619

### AUTOMATIC URINAL FLUSHER

Battery: Alkaline CR123Ax2pcs  
 Water supply pressure: 0.5~7 kgf/cm2  
 Sensor range: 40cm (adjustable)  
 Water supply Diameter: G 1/2" or PF 1/2"  
 Water supply: 1~60 °C  
 Flushing time: Pre-flush: 2 seconds; Final-flush: 7 seconds  
 Packing: 12 pcs/ ctn

Item No.	Material	Finished	Dimension (W*D*H)
FD-619	Brass with chrome plated	Polished	64*130*150 mm



FD-629

### AUTOMATIC URINAL FLUSHER

With Manual flushing button  
 Battery: Alkaline CR123Ax2pcs  
 Water supply pressure: 0.5~7 kgf/cm2  
 Sensor range: 40cm (adjustable)  
 Water supply Diameter: G 1/2" or PF 1/2"  
 Water supply: 1~60 °C  
 Flushing time: Pre-flush: 2 seconds; Final-flush: 7 seconds  
 Packing: 12 pcs/ ctn

Item No.	Material	Finished	Dimension (W*D*H)
FD-629	Brass with chrome plated	Polished	64*130*150 mm



FD-719-U

### AUTOMATIC URINAL FLUSHER

With Manual flushing button  
 Battery: Alkaline CR123Ax2pcs  
 Water supply pressure: 0.5~8 kgf/cm2  
 Sensor range: 50-70cm (adjustable)  
 Water supply Diameter: G 1/2" or PF 1/2"  
 Flushing time: 6-12 seconds  
 Packing: 6 pcs/ ctn

Item No.	Material	Finished	Dimension (W*D*H)
FD-719-U	Brass with chrome plated	Polished	64*130*150 mm



FD-719-T

### AUTOMATIC TOILET FLUSHER

With Manual flushing button  
 Battery: Alkaline CR123Ax2pcs  
 Water supply pressure: 0.5~8 kgf/cm2  
 Sensor range: 50-70cm (adjustable)  
 Water supply Diameter: G 1/2" or PF 1/2"  
 Flushing time: 6-12 seconds  
 Packing: 6 pcs/ ctn

Item No.	Material	Finished	Dimension (W*D*H)
FD-719-T	Brass with chrome plated	Polished	64*130*150 mm



CP-594-1

### FOAM SOAP DISPENSER

Installation: Wall mounted  
 Pump: Foam Soap  
 Volume: 1000ml  
 Refill: Refillable bottle or Disposable Sachet  
 Packing: 12 pcs/ ctn

**NEW**

Item No.	Material	Finished	Dimension (W*D*H)
CP-594-1	PP Cover and ABS	White	135*108*260 mm
CP-594G-1	PP Cover and ABS	Grey	135*108*260 mm
CP-594M-1	PP Cover and ABS	Black	135*108*260 mm



CP-594-2

### LIQUID SOAP DISPENSER

Installation: Wall mounted  
 Pump: Liquid Soap  
 Volume: 1000ml  
 Refill: Refillable bottle or Disposable Sachet  
 Packing: 12 pcs/ ctn

**NEW**

Item No.	Material	Finished	Dimension (W*D*H)
CP-594-2	PP Cover and ABS	White	135*108*260 mm
CP-594G-2	PP Cover and ABS	Grey	135*108*260 mm
CP-594M-2	PP Cover and ABS	Black	135*108*260 mm



CP-596-2

### SMALL SOAP DISPENSER

Installation: Wall mounted  
 Pump: Liquid Soap  
 Volume: 500ml  
 Refill: Refillable bottle or Disposable Sachet  
 Packing: 20 pcs/ ctn

**NEW**

Item No.	Material	Finished	Dimension (W*D*H)
CP-596-2	PP Cover and ABS	White	109.5*87*218.5 mm
CP-596G-2	PP Cover and ABS	Grey	109.5*87*218.5 mm
CP-596M-2	PP Cover and ABS	Black	109.5*87*218.5 mm



CP-596-3

### SMALL SANITIZER DISPENSER

Installation: Wall mounted  
 Pump: Spray  
 Volume: 500ml  
 Refill: Refillable bottle or Disposable Sachet  
 Packing: 20 pcs/ ctn

**NEW**

Item No.	Material	Finished	Dimension (W*D*H)
CP-596-3	PP Cover and ABS	White	109.5*87*218.5 mm
CP-596G-3	PP Cover and ABS	Grey	109.5*87*218.5 mm
CP-596M-3	PP Cover and ABS	Black	109.5*87*218.5 mm



FD-591

### FOAM SOAP DISPENSER

Installation: Wall mounted  
 Pump: Foam Soap  
 Volume: 1000ml  
 Refill: Refillable bottle or Refill Soap Cartridge FD-591T  
 Packing: 30 pcs/ ctn

**WORK  
IN  
PROGRESS**

Item No.	Material	Finished	Dimension (W*D*H)
FD-591	ABS with HDPE bottle	White and Grey	130*100*240 mm
FD-591M	ABS with HDPE bottle	Whole Black	130*100*240 mm
FD-591EC	ABS without bottle	White and Grey	130*100*240 mm



FD-593

### LIQUID SOAP DISPENSER

Installation: Wall mounted  
 Pump: Liquid Soap  
 Volume: 1000ml  
 Refill: Refillable bottle or Soap Bag Box Cartridge  
 Packing: 30 pcs/ ctn

Item No.	Material	Finished	Dimension (W*D*H)
FD-593	ABS with HDPE bottle	White and Grey	130*100*240 mm
FD-593M	ABS with HDPE bottle	Whole Black	130*100*240 mm
FD-593EC	ABS without bottle	White and Grey	130*100*240 mm



FD-623-01

### LIQUID SOAP DISPENSER

Installation: Wall mounted  
 Pump: Liquid Soap  
 Volume: 600ml  
 Refill: Refillable  
 Packing: 40 pcs/ ctn

Item No.	Material	Finished	Dimension (W*D*H)
FD-623-01	ABS	White and Transparent Body	84*79*218 mm
FD-623-02	ABS	White and Brown Body	84*79*218 mm
FD-623-03	ABS	White and Dark Blue Body	84*79*218 mm



FD-623-02

### LIQUID SOAP DISPENSER with Lock

Installation: Wall mounted  
 Pump: Liquid Soap  
 Volume: 600ml  
 Refill: Refillable  
 Packing: 40 pcs/ ctn

Item No.	Material	Finished	Dimension (W*D*H)
FD-623L-01	ABS	White and Transparent Body	84*79*218 mm
FD-623L-02	ABS	White and Brown Body	84*79*218 mm
FD-623L-03	ABS	White and Dark Blue Body	84*79*218 mm



FD-623-03



FD-1023-01

### LIQUID SOAP DISPENSER

Installation: Wall mounted  
 Pump: Liquid Soap  
 Volume: 1000ml  
 Refill: Refillable  
 Packing: 20 pcs/ ctn

Item No.	Material	Finished	Dimension (W*D*H)
FD-1023-01	ABS	White and Transparent Body	80*110*260 mm
FD-1023-02	ABS	White and Brown Body	80*110*260 mm
FD-1023-03	ABS	White and Dark Blue Body	80*110*260 mm



FD-1023-02

### LIQUID SOAP DISPENSER with Lock

Installation: Wall mounted  
 Pump: Liquid Soap  
 Volume: 1000ml  
 Refill: Refillable  
 Packing: 20 pcs/ ctn

Item No.	Material	Finished	Dimension (W*D*H)
FD-1023L-01	ABS	White and Transparent Body	80*110*260 mm
FD-1023L-02	ABS	White and Brown Body	80*110*260 mm
FD-1023L-03	ABS	White and Dark Blue Body	80*110*260 mm



FD-1023-03



FD-723-01

### LIQUID SOAP DISPENSER

Installation: Wall mounted  
 Pump: Liquid Soap  
 Volume: 500ml  
 Refill: Refillable  
 Packing: 24 pcs/ ctn

Item No.	Material	Finished	Dimension (W*D*H)
FD-723-01	ABS	White and Transparent Body	83*84*228 mm



FD-723D-01

### LIQUID SOAP DISPENSER

Installation: Wall mounted  
 Pump: Liquid Soap  
 Volume: 500ml \*2  
 Refill: Refillable  
 Packing: 24 pcs/ ctn

Item No.	Material	Finished	Dimension (W*D*H)
FD-723D-01	ABS	White and Transparent Body	144*84*228 mm



FD-26

### LIQUID SOAP DISPENSER

Installation: Wall mounted  
 Pump: Liquid Soap  
 Volume: 300ml  
 Refill: Refillable bottle  
 Packing: 40 pcs/ ctn

Item No.	Material	Finished	Dimension (W*D*H)
FD-26	ABS with HDPE bottle	White and Grey	68*79*214 mm
FD-26M	ABS with HDPE bottle	Whole Black	68*79*214 mm
FD-26G	ABS with Powder Coating	Gun Grey	68*79*214 mm



FD-27

### LIQUID SOAP DISPENSER

Installation: Wall mounted  
 Pump: Liquid Soap  
 Volume: 300ml \*2 Chamber  
 Refill: Refillable bottle  
 Packing: 20 pcs/ ctn

Item No.	Material	Finished	Dimension (W*D*H)
FD-27	ABS with HDPE bottle	White and Grey	138*79*214 mm
FD-27M	ABS with HDPE bottle	Whole Black	138*79*214 mm
FD-27G	ABS with Powder Coating	Gun Grey	138*79*214 mm



FD-28

### LIQUID SOAP DISPENSER

Installation: Wall mounted  
 Pump: Liquid Soap  
 Volume: 300ml \*3 Chamber  
 Refill: Refillable bottle  
 Packing: 10 pcs/ ctn

Item No.	Material	Finished	Dimension (W*D*H)
FD-28	ABS with HDPE bottle	White and Grey	208*79*214 mm
FD-28M	ABS with HDPE bottle	Whole Black	208*79*214 mm
FD-28G	ABS with Powder Coating	Gun Grey	208*79*214 mm



2601

### REFILLABLE SOAP BOTTLE

Installation: For FD-26, FD-27, FD-28 series  
 Pump: Liquid Soap  
 Volume: 300ml  
 Refill: Refillable  
 Packing: 30 pcs/ ctn

Item No.	Material	Finished
2601	HDPE bottle	White Transparent



FD-23G

### LIQUID SOAP DISPENSER

Installation: Wall mounted  
 Pump: Liquid Soap  
 Volume: 500ml  
 Refill: Refillable bottle  
 Packing: 24 pcs/ ctn

Item No.	Material	Finished	Dimension (W*D*H)
FD-23	ABS with HDPE bottle	Whole White	50*78*320 mm
FD-23S	ABS with Chrome plating	Chrome	50*78*320 mm
FD-23G	ABS with Powder Coating	Gun Grey	50*78*320 mm



FD-24G

### LIQUID SOAP DISPENSER

Installation: Wall mounted  
 Pump: Liquid Soap  
 Volume: 500ml \*2 Chamber  
 Refill: Refillable bottle  
 Packing: 24 pcs/ ctn

Item No.	Material	Finished	Dimension (W*D*H)
FD-24	ABS with HDPE bottle	Whole White	100*78*320 mm
FD-24S	ABS with Chrome plating	Chrome	100*78*320 mm
FD-24G	ABS with Powder Coating	Gun Grey	100*78*320 mm



FD-25G

### LIQUID SOAP DISPENSER

Installation: Wall mounted  
 Pump: Liquid Soap  
 Volume: 500ml \*3 Chamber  
 Refill: Refillable bottle  
 Packing: 12 pcs/ ctn

Item No.	Material	Finished	Dimension (W*D*H)
FD-25	ABS with HDPE bottle	Whole White	150*78*320 mm
FD-25S	ABS with Chrome plating	Chrome	150*78*320 mm
FD-25G	ABS with Powder Coating	Gun Grey	150*78*320 mm



23S01

### REFILLABLE SOAP BOTTLE

Installation: For FD-23, FD-24, FD-25 series  
 Pump: Liquid Soap  
 Volume: 500ml  
 Refill: Refillable  
 Packing: 30 pcs/ ctn

Item No.	Material	Finished
2301	HDPE bottle	White Button
23S01	HDPE bottle	Black Button



CP-1078W

### PAPER TOWEL DISPENSER

Installation: Wall mounted  
 Volume: Single Pack Multifolded Paper Towel  
 Packing: 12 pcs/ ctn



Item No.	Material	Finished	Dimension (W*D*H)
CP-1078W	PP	White	282*100*250 mm
CP-1078M	PP	Black	282*100*250 mm



FD-128W

### PAPER TOWEL DISPENSER

Installation: Wall mounted  
 Volume: Single Pack Multifolded Paper Towel  
 Packing: 12 pcs/ ctn

Item No.	Material	Finished	Dimension (W*D*H)
FD-128W	ABS	White	245*90*210 mm



FD-428

### PAPER TOWEL DISPENSER

Installation: Wall mounted  
 Volume: Single Pack Multifolded Paper Towel  
 Packing: 16 pcs/ ctn

Item No.	Material	Finished	Dimension (W*D*H)
FD-428	ABS	Transparent Cover and White Base	260*95*285 mm



FD-528-03

### PAPER TOWEL DISPENSER

Installation: Wall mounted  
 Volume: Single Pack Multifolded Paper Towel  
 Packing: 12 pcs/ ctn

Item No.	Material	Finished	Dimension (W*D*H)
FD-528-03	ABS	Dark Transparent and White Base	260*134*262 mm



FD-528W

### PAPER TOWEL DISPENSER

Installation: Wall mounted  
 Volume: Single Pack Multifolded Paper Towel  
 Packing: 12 pcs/ ctn

Item No.	Material	Finished	Dimension (W*D*H)
FD-528W	ABS	White Cover and White Base	260*134*262 mm





FD-1048W

### PAPER TOWEL DISPENSER

Installation: Wall mounted  
 Volume: Single Pack Multifolded Paper Towel  
 Packing: 12 pcs/ ctn

WORK  
IN  
PROGRESS

Item No.	Material	Finished	Dimension (W*D*H)
FD-1048W	ABS	Whole White Set	274*97*212 mm
FD-1048M	ABS	Whole Black Set	274*97*212 mm
FD-1048	ABS	White Cover with Grey Base	274*97*212 mm
FD-1048G	ABS	Gun Grey Powder Coating	274*97*212 mm



FD-365

### CENTER PULL TISSUE ROLL DISPENSER

Installation: Wall mounted  
 Volume: Ø220\*95 mm Center Pull Jumbo Roll  
 Refill: FD-365P-720  
 Packing: 30 pcs/ ctn

NEW

Item No.	Material	Finished	Dimension (W*D*H)
FD-365	ABS	Whole White Set	Ø 235*110 mm
FD-365M	ABS	Whole Black Set	Ø 235*110 mm



FD-2048

### SLIMLINE PAPER TOWEL DISPENSER

Installation: Wall mounted  
 Volume: Double Pack Multifolded Paper Towel  
 Packing: 6 pcs/ ctn

WORK  
IN  
PROGRESS

Item No.	Material	Finished	Dimension (W*D*H)
FD-2048W	ABS	Whole White Set	274*97*381 mm
FD-2048M	ABS	Whole Black Set	274*97*381 mm
FD-2048	ABS	White Cover with Grey Base	274*97*381 mm
FD-2048G	ABS	Gun Grey Powder Coating	274*97*381 mm



FD-465

### CENTER PULL TISSUE ROLL DISPENSER

Installation: Wall mounted  
 Volume: Ø220\*95 mm Center Pull Jumbo Roll \* 2 rolls  
 Refill: FD-365P-720  
 Packing: 12 pcs/ ctn

NEW

Item No.	Material	Finished	Dimension (W*D*H)
FD-465	ABS	Whole White Set	484*102*239 mm
FD-465M	ABS	Whole Black Set	484*102*239 mm



FD-828

### SLIMLINE PAPER TOWEL DISPENSER

Installation: Wall mounted  
 Volume: Double Pack Multifolded Paper Towel  
 Packing: 6 pcs/ ctn

Item No.	Material	Finished	Dimension (W*D*H)
FD-828	ABS	White with Dark window	273*119*367 mm
FD-828W	ABS	White with White window	273*119*367 mm



CP-525W

### JUMBO ROLL TOILET PAPER DISPENSER

Installation: Wall mounted  
 Volume: Maximum Roll Ø260\*100 mm  
 Inner Core Option: 45mm or 72mm  
 Packing: 12 pcs/ ctn

NEW

Item No.	Material	Finished	Dimension (W*D*H)
CP-525W	PP	Whole White Set	286*127*284mm
CP-525M	PP	Whole Black Set	286*127*284mm
CP-525W-72	PP	Whole White Set/ 72mm core	286*127*284mm
CP-525M-72	PP	Whole Black Set/ 72mm core	286*127*284mm



FD-1068W

### SLIMLINE PAPER TOWEL DISPENSER

Installation: Wall mounted  
 Volume: Double Pack Multifolded Paper Towel  
 Packing: 10 pcs/ ctn

Item No.	Material	Finished	Dimension (W*D*H)
FD-1068	ABS	Dark Transparent Cover	275*105*375 mm
FD-1068W	ABS	Whole White set	275*105*375 mm



FD-1425

### 4-ROLL CAROUSEL TISSUE DISPENSER

Installation: Wall mounted  
 Volume: Carousel Tissue roll \* 4 rolls  
 Packing: 6 pcs/ ctn

NEW

Item No.	Material	Finished	Dimension (W*D*H)
FD-1425	ABS	Dark Cover with White base	350*160*383 mm
FD-1425W	ABS	White Cover with White base	350*160*383 mm



FD-325-03

### JUMBO ROLL TOILET PAPER DISPENSER

Installation: Wall mounted  
 Accessories: Lock with Key  
 Volume: Maximum Roll Ø260\*100 mm  
 Inner Core Option: 42mm/ 49mm/ 72mm  
 Packing: 12 pcs/ ctn

Item No.	Material	Finished	Dimension (W*D*H)
FD-325-03	ABS	With 72mm core	270*120*280 mm
FD-325S-03	ABS	With 49mm core	270*120*280 mm
FD-325SS-03	ABS	With 42mm core	270*120*280 mm



FD-4018W

### FOLDED TISSUE DISPENSER

Installation: Wall mounted  
 Volume: Two Packs of Multifolded Tissue Paper  
 Packing: 15 pcs/ ctn

WORK  
IN  
PROGRESS

Item No.	Material	Finished	Dimension (W*D*H)
FD-4018W	ABS	Whole White Set	127*109*278 mm
FD-4018M	ABS	Whole Black Set	127*109*278 mm



FD-325W

### JUMBO ROLL TOILET PAPER DISPENSER

Installation: Wall mounted  
 Accessories: Lock with Key  
 Volume: Maximum Roll Ø260\*100 mm  
 Inner Core Option: 42mm/ 49mm/ 72mm  
 Packing: 12 pcs/ ctn

Item No.	Material	Finished	Dimension (W*D*H)
FD-325W	ABS	With 72mm core	270*120*280 mm
FD-325WS	ABS	With 49mm core	270*120*280 mm
FD-325WSS	ABS	With 42mm core	270*120*280 mm



FD-1018W

### FOLDED TISSUE DISPENSER

Installation: Wall mounted  
 Volume: Two Packs of Multifolded Tissue Paper  
 Packing: 15 pcs/ ctn

Item No.	Material	Finished	Dimension (W*D*H)
FD-1018W	ABS	White	135*115*245 mm



FD-425-03

### JUMBO ROLL TOILET PAPER DISPENSER

Installation: Wall mounted  
 Accessories: Lock with Key  
 Volume: Maximum Roll Ø260\*100 mm \*2 Rolls  
 Inner Core Option: 42mm/ 60mm/ 72mm  
 Packing: 6 pcs/ ctn

Item No.	Material	Finished	Dimension (W*D*H)
FD-425-03	ABS	With 42mm core	550*125*285 mm
FD-425-03-60	ABS	With 60mm core	550*125*285 mm
FD-425-03-72	ABS	With 72mm core	550*125*285 mm



FD-1028W

### FOLDED TISSUE DISPENSER

Installation: Wall mounted  
 Volume: Two Chambers of Two Packs of Multifolded Tissue Paper  
 Packing: 10 pcs/ ctn

Item No.	Material	Finished	Dimension (W*D*H)
FD-1028W	ABS	White	260*112*260 mm



FD-425W

### JUMBO ROLL TOILET PAPER DISPENSER

Installation: Wall mounted  
 Accessories: Lock with Key  
 Volume: Maximum Roll Ø260\*100 mm \*2 Rolls  
 Inner Core Option: 42mm/ 60mm/ 72mm  
 Packing: 6 pcs/ ctn

Item No.	Material	Finished	Dimension (W*D*H)
FD-425W	ABS	With 42mm core	550*125*285 mm
FD-425W-60	ABS	With 60mm core	550*125*285 mm
FD-425W-72	ABS	With 72mm core	550*125*285 mm





CP-847W

### PAPER TOWEL ROLL DISPENSER

Installation: Wall mounted  
 Function: Manual Pull, Auto cut, battery free  
 Volume: Maximum Roll Ø200\*210 mm  
 Core: 35 mm/ 45 mm  
 Packing: 4 pcs/ ctn

**NEW**

Item No.	Material	Finished	Dimension (W*D*H)
CP-847W	PP and ABS	White	290*220*363 mm
CP-847W-45	PP and ABS	White	290*220*363 mm



CP-458W

### CENTER PULL TOWEL DISPENSER

Installation: Wall mounted  
 Volume: Maximum Roll Ø200\*245 mm  
 Packing: 6 pcs/ ctn

Item No.	Material	Finished	Dimension (W*D*H)
CP-458W	PP and ABS	Whole White set	225*215*363 mm
CP-458M	PP and ABS	Whole Black set	225*215*363 mm



FD-747W

### PAPER TOWEL ROLL DISPENSER

Installation: Wall mounted  
 Function: Manual Pull, Auto cut, battery free  
 Volume: Maximum Roll Ø200\*210 mm  
 Core: 35 mm  
 Packing: 4 pcs/ ctn

Item No.	Material	Finished	Dimension (W*D*H)
FD-747W	ABS	White	252*210*312 mm



FD-158WW

### CENTER PULL TOWEL DISPENSER

Installation: Wall mounted  
 Volume: Maximum Roll Ø220\*300 mm  
 Packing: 6 pcs/ ctn

Item No.	Material	Finished	Dimension (W*D*H)
FD-158WW	ABS	Whole White set	245*255*400 mm
FD-158	ABS	Whole Black set	245*255*400 mm



FD-880

### TOILET SEAT COVER DISPENSER

Installation: Wall mounted  
 Refill: FD-880P  
 Volume: 1/2 folded Toilet Seat Cover  
 Packing: 20 pcs/ ctn

Item No.	Material	Finished	Dimension (W*D*H)
FD-880	ABS	White	412*63*293 mm



FD-258

### CENTER PULL TOWEL DISPENSER

Installation: Wall mounted  
 Volume: Maximum Roll Ø220\*245 mm  
 Packing: 6 pcs/ ctn

Item No.	Material	Finished	Dimension (W*D*H)
FD-258	ABS	Whole Black set	240*250*295 mm
FD-258WG	ABS	Grey Cover with White base	240*250*295 mm



CP-682

### URINAL SANITIZER DISPENSER

Installation: Wall mounted  
 Battery: Alkaline battery C\* 2pcs  
 Refill: Refillable Bottle or Disposable Sachet  
 Volume: 600 ml  
 Packing: 12 pcs/ ctn

**NEW**

Item No.	Material	Finished	Dimension (W*D*H)
CP-682	ABS	White	120*85*210 mm



FD-358

### MINI CENTER PULL TOWEL DISPENSER

Installation: Wall mounted  
 Volume: Maximum Roll Ø135\*225 mm  
 Packing: 12 pcs/ ctn

Item No.	Material	Finished	Dimension (W*D*H)
FD-358	ABS	Dark Cover with White base	172*175*270 mm

### GRAB BAR

Installation: Wall mounted  
 Material Thickness: 18-gauge / 1.2 mm  
 Bar Diameter: 1-1/4 "  
 Packing: 10 pcs/ ctn



GB-700SS

Item No.	Material	Finished	Dimension (W*D*H)
GB-700SS-14-1	SS #304	Brushed	12 inch / 304.8 mm
GB-700SS-14-2	SS #304	Brushed	18 inch / 457 mm
GB-700SS-14-3	SS #304	Brushed	24 inch / 610 mm
GB-700SS-14-5	SS #304	Brushed	36 inch / 914 mm
GB-700SS-14-6	SS #304	Brushed	48 inch / 1219 mm
GB-700M-14-1	304 with Powder coating	Black	12 inch / 304.8 mm
GB-700M-14-2	304 with Powder coating	Black	18 inch / 457 mm
GB-700M-14-3	304 with Powder coating	Black	24 inch / 610 mm
GB-700M-14-5	304 with Powder coating	Black	36 inch / 914 mm
GB-700M-14-6	304 with Powder coating	Black	48 inch / 1219 mm

Other lengths are available upon request.

### 130° ANGLED GRAB BAR

Installation: Wall mounted  
 Material Thickness: 18-gauge / 1.2 mm  
 Bar Diameter: 1-1/4 "  
 Packing: 10 pcs/ ctn



GB-602SS



Item No.	Material	Finished	Dimension (W*D*H)
GB-602SS-14-2	SS #304	Brushed	300*300 mm
GB-602SS-14-3	SS #304	Brushed	400*400 mm
GB-602BS-14-2	SS #304	Polished	300*300 mm
GB-602BS-14-3	SS #304	Polished	400*400 mm
GB-602M-14-2	304 with Powder coating	Black	300*300 mm
GB-602M-14-3	304 with Powder coating	Black	400*400 mm

Other lengths are available upon request.

### 90° ANGLED GRAB BAR

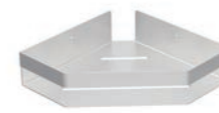
Installation: Wall mounted  
 Material Thickness: 18-gauge / 1.2 mm  
 Bar Diameter: 1-1/4 "  
 Packing: 10 pcs/ ctn



GB-614SS

Item No.	Material	Finished	Dimension (W*D*H)
GB-614SS-14	SS #304	Brushed	450*450 mm
GB-612SS-14	SS #304	Brushed	750*750 mm
GB-614M-14	304 with Powder coating	Black	450*450 mm
GB-612M-14	304 with Powder coating	Black	750*750 mm

Other lengths are available upon request.



CS-558



CS-555



CS-556



CS-554



CS-431

### CORNER SHELF

Installation: Wall mounted  
 Packing: 20 pcs/ ctn

Item No.	Material	Finished	Dimension (W*D*H)
CS-558	SS #304	Brushed	230*230*65 mm
CS-558B	SS #304	Polished	230*230*65 mm
CS-558M	304 with Powder coating	Matte Black	230*230*65 mm
CS-558W	304 with Powder coating	White	230*230*65 mm

### BATH SHELF

Installation: Wall mounted  
 Packing: 20 pcs/ ctn

Item No.	Material	Finished	Dimension (W*D*H)
CS-555	SS #304	Brushed	300*105*65 mm
CS-555B	SS #304	Polished	300*105*65 mm
CS-555M	304 with Powder coating	Matte Black	300*105*65 mm
CS-555W	304 with Powder coating	White	300*105*65 mm

### BATH SHELF

Installation: Wall mounted  
 Packing: 20 pcs/ ctn

Item No.	Material	Finished	Dimension (W*D*H)
CS-556	SS #304	Brushed	450*105*65 mm
CS-556M	304 with Powder coating	Matte Black	450*105*65 mm
CS-556W	304 with Powder coating	White	450*105*65 mm

### TOWEL RAIL

Installation: Wall mounted  
 Packing: 20 pcs/ ctn

Item No.	Material	Finished	Dimension (W*D*H)
CS-554	SS #304	Brushed	450*80*40 mm
CS-554M	304 with Powder coating	Matte Black	450*80*40 mm
CS-554W	304 with Powder coating	White	450*80*40 mm

### TOILET BRUSH HOLDER

Installation: Wall mounted  
 Packing: 20 pcs/ ctn



Item No.	Material	Finished	Dimension (W*D*H)
CS-431	SS #304	Brushed	93*90*410 mm
CS-431M	304 with Powder coating	Matte Black	93*90*410 mm
CS-431W	304 with Powder coating	White	93*90*410 mm

### TOWEL RAIL - SINGLE

Installation: Wall mounted  
 Accessories: Mounting plate  
 Packing: 20 pcs/ ctn



CS-451

Item No.	Material	Finished	Dimension (W*D*H)
CS-451	SS #304	Brushed	600*75*20 mm
CS-451B	SS #304	Polished	600*75*20 mm
CS-451M	304 with Powder coating	Matte Black	600*75*20 mm
CS-451W	304 with Powder coating	White	600*75*20 mm

### TOWEL RAIL - DOUBLE

Installation: Wall mounted  
 Accessories: Mounting plate  
 Packing: 20 pcs/ ctn



CS-452

Item No.	Material	Finished	Dimension (W*D*H)
CS-452	SS #304	Brushed	600*120*20 mm
CS-452B	SS #304	Polished	600*120*20 mm
CS-452M	304 with Powder coating	Matte Black	600*120*20 mm
CS-452W	304 with Powder coating	White	600*120*20 mm

### TOWEL SHELF

Installation: Wall mounted  
 Accessories: Mounting plate  
 Packing: 10 pcs/ ctn



CS-453

Item No.	Material	Finished	Dimension (W*D*H)
CS-453	SS #304	Brushed	600*220*20 mm
CS-453B	SS #304	Polished	600*220*20 mm
CS-453M	304 with Powder coating	Matte Black	600*220*20 mm
CS-453W	304 with Powder coating	White	600*220*20 mm

### TOWEL SHELF

Installation: Wall mounted  
 Accessories: Mounting plate  
 Packing: 10 pcs/ ctn



CS-454

Item No.	Material	Finished	Dimension (W*D*H)
CS-454	SS #304	Brushed	600*75*115 mm
CS-454B	SS #304	Polished	600*75*115 mm
CS-454M	304 with Powder coating	Matte Black	600*75*115 mm
CS-454W	304 with Powder coating	White	600*75*115 mm

### SOAP DISH

Installation: Wall mounted  
 Accessories: Mounting plate  
 Packing: 50 pcs/ ctn



CS-456

Item No.	Material	Finished	Dimension (W*D*H)
CS-456	SS #304 and glass	Brushed	105*115*45 mm
CS-456B	SS #304 and glass	Polished	105*115*45 mm
CS-456M	304 with Powder coating	Matte Black	105*115*45 mm
CS-456W	304 with Powder coating	White	105*115*45 mm



CS-457

### CLOTHES HOOK - SINGLE

Installation: Wall mounted  
 Packing: 100 pcs/ ctn

Item No.	Material	Finished	Dimension (W*D*H)
CS-457	SS #304	Brushed	20*40*70 mm
CS-457B	SS #304	Polished	20*40*70 mm
CS-457M	304 with Powder coating	Matte Black	20*40*70 mm
CS-457W	304 with Powder coating	White	20*40*70 mm



CS-458

### CLOTHES HOOK - DOUBLE

Installation: Wall mounted  
 Packing: 50 pcs/ ctn

Item No.	Material	Finished	Dimension (W*D*H)
CS-458	SS #304	Brushed	70*40*30 mm
CS-458B	SS #304	Polished	70*40*30 mm
CS-458M	304 with Powder coating	Matte Black	70*40*30 mm
CS-458W	304 with Powder coating	White	70*40*30 mm



CS-551

### CLOTHES HOOK - SINGLE

Installation: Wall mounted  
 Packing: 50 pcs/ ctn

Item No.	Material	Finished	Dimension (W*D*H)
CS-551	SS #304	Brushed	30*30*80 mm
CS-551B	SS #304	Polished	30*30*80 mm
CS-551M	304 with Powder coating	Matte Black	30*30*80 mm
CS-551W	304 with Powder coating	White	30*30*80 mm



CS-552

### CLOTHES HOOK - TRIPLE

Installation: Wall mounted  
 Packing: 20 pcs/ ctn

Item No.	Material	Finished	Dimension (W*D*H)
CS-552	SS #304	Brushed	180*30*50 mm
CS-552B	SS #304	Polished	180*30*50 mm
CS-552M	304 with Powder coating	Matte Black	180*30*50 mm
CS-552W	304 with Powder coating	White	180*30*50 mm



CS-432

### TOILET BRUSH HOLDER

Installation: Wall mounted  
 Accessories: Mounting plate  
 Packing: 20 pcs/ ctn

Item No.	Material	Finished	Dimension (W*D*H)
CS-432	SS #304 and glass	Brushed	93*126*37 mm
CS-432M	304 with Powder coating	Matte Black	93*126*37 mm
CS-432W	304 with Powder coating	White	93*126*37 mm



AE-660

### 1/4 FOLD TOILET SEAT COVER DISPENSER

Installation: Wall mounted  
 Material Thickness: 22-gauge / 0.8 mm  
 Packing: 10 pcs/ ctn

Item No.	Material	Finished	Dimension (W*D*H)
AE-660	SS #304	Brushed	230*50*290 mm
AE-660B	SS #304	Polished	230*50*290 mm
AE-660M	Steel with powder coating	Matte Black	230*50*290 mm
AE-660W	Steel with powder coating	White	230*50*290 mm



AE-880R

### RECESSED TOILET SEAT COVER DISPENSER

Installation: Wall mounted  
 Material Thickness: 22-gauge / 0.8 mm  
 Packing: 6 pcs/ ctn

Item No.	Material	Finished	Dimension (W*D*H)
AE-880R	SS #304	Brushed	438*67*324 mm
AE-880RB	SS #304	Polished	438*67*324 mm
AE-880RM	Steel with powder coating	Matte Black	438*67*324 mm
AE-880RW	Steel with powder coating	White	438*67*324 mm



AE-770

### TOILET SEAT COVER DISPENSER

Installation: Wall mounted  
 Material Thickness: 22-gauge / 0.8 mm  
 Packing: 12 pcs/ ctn

Item No.	Material	Finished	Dimension (W*D*H)
AE-770	SS #304	Brushed	393*50*292 mm
AE-770B	SS #304	Polished	393*50*292 mm
AE-770M	Steel with powder coating	Matte Black	393*50*292 mm
AE-770W	Steel with powder coating	White	393*50*292 mm



CP-9013

### BABY CHANGING STATION

Packing: 1 pcs/ ctn

Item No.	Material	Finished	Dimension (W*D*H)
CP-9013	HDPE Plastic	White	855*585*495 mm



CS-9014

### BABY CHANGING STATION

Packing: 1 pcs/ ctn

Item No.	Material	Finished	Dimension (W*D*H)
CS-9014	SS #304 with HDPE Plastic	Brushed	905*495*520 mm



AE-401

### CLOTHES HOOK - SINGLE

Installation: Wall mounted  
 Packing: 150 pcs/ ctn

Item No.	Material	Finished	Dimension (W*D*H)
AE-401	SS #304	Polished	51*42*51 mm
AE-401SS	SS #304	Brushed	51*42*51 mm



AE-402

### CLOTHES HOOK - DOUBLE

Installation: Wall mounted  
 Packing: 150 pcs/ ctn

Item No.	Material	Finished	Dimension (W*D*H)
AE-402	SS #304	Polished	100*48*51 mm
AE-402SS	SS #304	Brushed	100*48*51 mm



AE-408

### CLOTHES HOOK - DOUBLE

Installation: Wall mounted  
 Packing: 150 pcs/ ctn

Item No.	Material	Finished	Dimension (W*D*H)
AE-408	SS #304	Polished	51*48*51 mm
AE-408SS	SS #304	Brushed	51*48*51 mm



AE-409

### COAT AND HAT HOOK

Installation: Wall mounted  
 Packing: 100 pcs/ ctn

Item No.	Material	Finished	Dimension (W*D*H)
AE-409	SS #304	Polished	51*70*175 mm
AE-409SS	SS #304	Brushed	51*70*175 mm



AE-427

### TOILET BRUSH HOLDER

Accessories: Plastic container  
 Packing: 20 pcs/ ctn

Item No.	Material	Finished	Dimension (W*D*H)
AE-427	SS #430 and plastic	Polished	104*104*396 mm
AE-427M	Steel with Powder coating	Matte Black	104*104*396 mm
AE-427W	Steel with Powder coating	White	104*104*396 mm



AE-500SS

### TOWEL BAR

Installation: Wall mounted  
Packing: 50 pcs/ ctn

Item No.	Material	Finished	Dimension (W*D*H)
AE-500SS	SS #304	Polished	615*65*20 mm

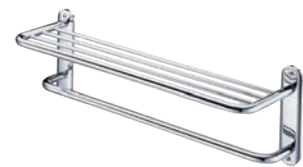


AE-501SS

### TOWEL SHELF

Installation: Wall mounted  
Packing: 12 pcs/ ctn

Item No.	Material	Finished	Dimension (W*D*H)
AE-501SS	SS #304	Polished	615*250*20 mm



AE-502SS

### TOWEL SHELF

Installation: Wall mounted  
Packing: 12 pcs/ ctn

Item No.	Material	Finished	Dimension (W*D*H)
AE-502SS	SS #304	Polished	615*250*215 mm



AE-275R

### RECESSED TISSUE DISPENSER

Installation: Recessed Wall mounted  
Packing: 24 pcs/ ctn

Item No.	Material	Finished	Dimension (W*D*H)
AE-275R	SS #304	Polished	300*67*156 mm
AE-275RSS	SS #304	Brushed	300*67*156 mm
AE-275RM	Steel with Powder coating	Matte Black	300*67*156 mm
AE-275RW	Steel with Powder coating	White	300*67*156 mm



AE-275

### TISSUE DISPENSER

Installation: Wall mounted  
Packing: 24 pcs/ ctn

Item No.	Material	Finished	Dimension (W*D*H)
AE-275	SS #304	Polished	283*65*140 mm
AE-275SS	SS #304	Brushed	283*65*140 mm
AE-275M	Steel with Powder coating	Matte Black	283*65*140 mm
AE-275W	Steel with Powder coating	White	283*65*140 mm



AE-312S

### SHOWER BASKET - SMALL

Packing: 50 pcs/ ctn

Item No.	Material	Finished	Dimension (W*D*H)
AE-312S	SS #304	Polished	130*100*33 mm
AE-312S-M	SS #304 with PVD	Matte Black	130*100*33 mm
AE-312S-B	SS #304 with PVD	Brass	130*100*33 mm



AE-312M

### SHOWER BASKET - MEDIUM

Packing: 50 pcs/ ctn

Item No.	Material	Finished	Dimension (W*D*H)
AE-312M	SS #304	Polished	200*95*33 mm
AE-312M-M	SS #304 with PVD	Matte Black	200*95*33 mm
AE-312M-B	SS #304 with PVD	Brass	200*95*33 mm



AE-312L

### SHOWER BASKET - LARGE

Packing: 24 pcs/ ctn

Item No.	Material	Finished	Dimension (W*D*H)
AE-312L	SS #304	Polished	260*155*50 mm
AE-312L-M	SS #304 with PVD	Matte Black	260*155*50 mm
AE-312L-B	SS #304 with PVD	Brass	260*155*50 mm



AE-313S

### CORNER SHOWER BASKET - SMALL

Packing: 50 pcs/ ctn

Item No.	Material	Finished	Dimension (W*D*H)
AE-313S	SS #304	Polished	165*115*33 mm
AE-313S-M	SS #304 with PVD	Matte Black	165*115*33 mm
AE-313S-B	SS #304 with PVD	Brass	165*115*33 mm



AE-313L

### CORNER SHOWER BASKET - LARGE

Packing: 42 pcs/ ctn

Item No.	Material	Finished	Dimension (W*D*H)
AE-313L	SS #304	Polished	230*154*50 mm
AE-313L-M	SS #304 with PVD	Matte Black	230*154*50 mm
AE-313L-B	SS #304 with PVD	Brass	230*154*50 mm



FD-1126S-G

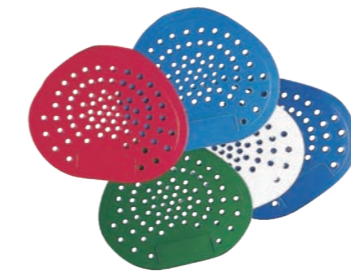
### ANTI-SPLASH URINAL SCREEN

Installation: For Men Urinal  
Packing: 100 pcs/ ctn

Item No.	Color	Fragrance
FD-1126S-G	Green	Bubblegum
FD-1126S-B	Blue	Cotton Blossom
FD-1126S-O	Orange	Citrus
FD-1126S-R	Red	Cherry
FD-1126S-Y	Yellow	Lemon

**NEW**

Customise fragrances are available upon request.



FD-1026S

### FLAT URINAL SCREEN

Installation: For Men Urinal  
Packing: 240 pcs/ ctn

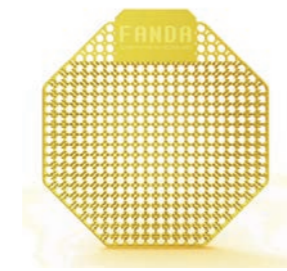
Item No.	Color	Fragrance
FD-1026S-G	Green	Apple
FD-1026S-LB	Light Blue	Mint
FD-1026S-DB	Dark Blue	Bubblegum
FD-1026S-R	Red	Cherry
FD-1026S-W	White	Lemon



FD-1126S-B



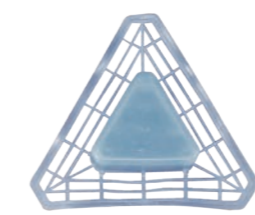
FD-1126S-R



FD-1126S-Y



FD-1126S-P



FD-1026T

### TRIANGULAR URINAL TAB

Installation: For Men Urinal  
Packing: 144 pcs/ ctn

Item No.	Color	Fragrance
FD-1026T	Light Blue	Ocean Mist

### LONG ANTI-SPLASH URINAL SCREEN

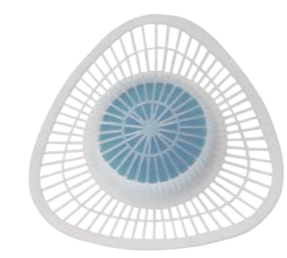
Installation: For Stainless Steel Trough Urinal  
Packing: 60 pcs/ ctn

Item No.	Color	Fragrance
FD-1126R-G	Green	Bubblegum
FD-1126R-B	Blue	Cotton Blossom
FD-1126R-O	Orange	Citrus
FD-1126R-R	Red	Cherry
FD-1126R-Y	Yellow	Lemon

**NEW**



FD-1126R



FD-1026E

### TRIANGULAR URINAL TAB

Installation: For Men Urinal  
Packing: 96 pcs/ ctn

Item No.	Color	Fragrance
FD-1026E	Light Blue	Ocean Mist



FD-1026G

### BUCKET URINAL BALLS

Installation: For Men Urinal  
Packing: 3 kgs/ pail. 4 pails/ ctn

Item No.	Color	Fragrance
FD-1026G	Light Blue	Ocean Mist





FD-520T

**NEW**

### ROUND LIQUID AIR FRESHENER

Installation: For FD-520L series  
 Pump: Liquid Spray  
 Volume: 300ml  
 Packing: 144 pcs/ ctn

Item No.	Fragrance	Item No.	Fragrance
FD-520T-07	Green Tea	FD-520T-36	Gardenia
FD-520T-14	Lemon	FD-520T-38	Ocean
FD-520T-25	Forest	FD-520T-39	Soft Linen
FD-520T-31	Jasmine	FD-520T-40	Freesia
FD-520T-32	Violet		

Customise fragrances are available upon request.



FD-420T

### SQUARE LIQUID AIR FRESHENER

Installation: For FD-620L series  
 Pump: Liquid Spray  
 Volume: 300ml  
 Packing: 144 pcs/ ctn

Item No.	Fragrance	Item No.	Fragrance
FD-420T-07	Green Tea	FD-420T-36	Gardenia
FD-420T-14	Lemon	FD-420T-38	Ocean
FD-420T-25	Forest	FD-420T-39	Soft Linen
FD-420T-31	Jasmine	FD-420T-40	Freesia
FD-420T-32	Violet		

Customise fragrances are available upon request.



FD-220T

### SQUARE LIQUID AIR FRESHENER

Installation: For FD-220L, FD-420L series  
 Pump: Liquid Spray  
 Volume: 300ml  
 Packing: 144 pcs/ ctn

Item No.	Fragrance	Item No.	Fragrance
FD-220T-07	Green Tea	FD-220T-36	Gardenia
FD-220T-14	Lemon	FD-220T-38	Ocean
FD-220T-25	Forest	FD-220T-39	Soft Linen
FD-220T-31	Jasmine	FD-220T-40	Freesia
FD-220T-32	Violet		

### METERED AIR FRESHENER

Installation: For FD-721L, FD-821L, FD-421WL, FD-1431WL series  
 Pump: Liquid Spray  
 Volume: 300ml  
 Packing: 60 pcs/ ctn

Item No.	Fragrance	Item No.	Fragrance
FD-221T-2007	Green Tea	FD-221T-6032	Violet
FD-221T-6014	Lemon	FD-221T-6036	Gardenia
FD-221T-6031	Jasmine	FD-221T-6038	Forest

FD-221T



FD-591T-01

### FOAM SOAP REFILL CARTRIDGE

Installation: For FD-591, AE-595 series  
 Packing: 12 pcs/ ctn

Item No.	Color	Fragrance
FD-591T-01	Light Blue	Green Tea
FD-591T-02	Clear	Fragrance Free



FD-365P

### CENTER PULL JUMBO ROLL

Installation: For FD-365, FD-465 series  
 Packing: 12 rolls/ ctn

**NEW**

Item No.	Material	Dimension (W*D*H)
FD-365P-720	Paper	Ø200*95 mm



FD-847P

### PAPER TOWEL ROLL

Installation: For CP-847W, FD-747W series  
 Packing: 6 rolls/ ctn

Item No.	Material	Dimension (W*D*H)
FD-847P	Paper	Ø200*210 mm



FD-880P

### TOILET SEAT COVER REFILL

Installation: For FD-880, AE-770, AE-880 series  
 Packing: 250 sheets/ box. 20 boxes/ ctn

Item No.	Material	Dimension (W*D*H)
FD-880P	Paper	1/2 folded



91399



81199



91396



80099



92399S



92399



923991S



923991



102399



723D99



42504



425041



59311



32503



82815



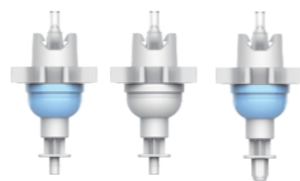
91304 91321



93501



22017 (62315) 22018 (62316)



Liquid Pump Foam Pump Spray Pump

**FANDA**  
QUALITY HYGIENIC ACCESSORIES

We're here to help you with all your hygienic accessory needs!

Whether you have a question about our products, need support with an order, or want to discuss a custom project, our team is ready.

Contact us!

[sales@fanda.com.tw](mailto:sales@fanda.com.tw)





## **FANDA HYGIENE CO., LTD.**

Warehouse Add.: No.18-25, Changsheng Ln., Sec. 1, Huanzhong Rd.,  
Beitun Dist., Taichung City 40671, Taiwan

Website: [www.fanda.com.tw](http://www.fanda.com.tw)

Email: [sales@fanda.com.tw](mailto:sales@fanda.com.tw)

Phone: +886-4-2422-0298

Fax: +886-4-2422-3340

Proudly Made in Taiwan